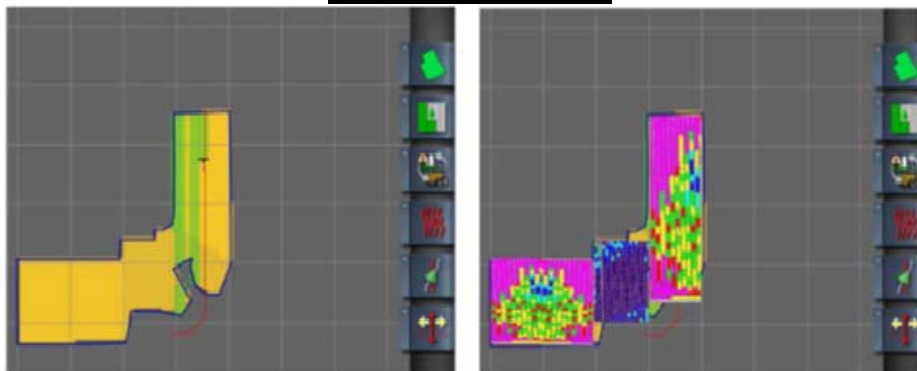


AI 120 Mapping Quick Start Guide



Quick Reference Guide for mapping on a Yield-Pro® Planter





Caution Please Read!!

- Note:
- This guide is intended for quick reference **only**. For complete set-up or operation see owners manual and or your dealer.
- The use of this guide is assuming that your system is set up and READY to go to the field.
- The factory sets planters up generically.
- Make sure that **any** and **all calibrations** are done before going to the field (see owners manual, dealer, or quick start guides).

3

Please understand Definitions before operation.

- **As Applied Mapping** is the Terminal recording JUST your rate as YOU manually change it in the cab.
- **Variable Rate Mapping** is when YOUR terminal automatically changes the planters population when driving through the field. The changes are based off of what you have created with your desk top software.
- **Terminal** is the “monitor” in the cab that our planter is displayed on.
- **VT** is virtual Terminal: a term to explain a “monitor”
- **Task Controller** is what is built into the Terminal to run your map
- **Master Switch** term used when dealing with your mapping and swath control. Needs to be GREEN when in operation.
- **Task Data** format of map when created
- **.XML** format of map when created
- **SHAPE** format of map when created

Sections

1. Import Variable rate job to terminal
2. Select a Variable Rate Task
3. Task Controller setup
4. Operation
5. Start and Stop Task
6. Clearing Job Data
7. Exporting Jobs
8. As Applied Jobs
 1. Create an as applied job report
9. Exporting a Variable rate Job

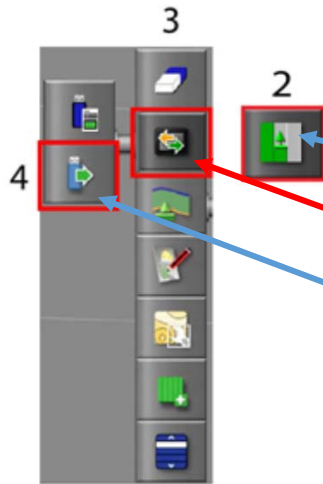


IMPORTANT

When creating a map please make sure you have created only **ONE** boundary. Multiple boundaries with in one field does not work. If boundaries and exclusions are not displaying, recheck how the map was created in the farm management software tool.

1

IMPORT VARIABLE RATE JOB TO TERMINAL



1. Insert USB memory device into USB port on the side of terminal.

2. Press the Job Menu button.

3. Press the Data Exchange button.

4. Select the Import Task Data button.

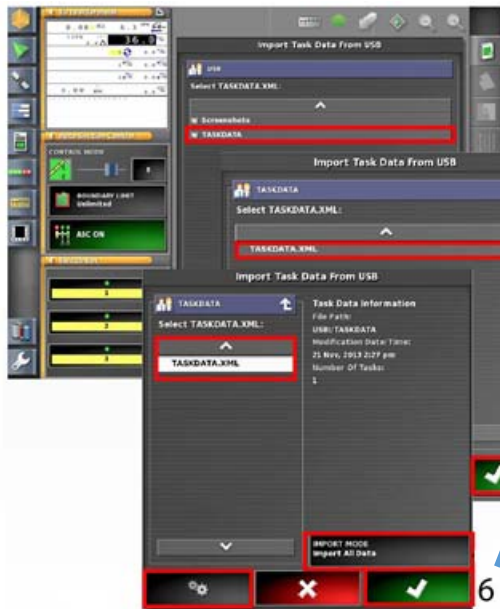


North Up

The following conditions are required before a task will import successfully to the terminal:

- A valid GPS signal
- Task Data Enabled at the Settings screen
- Guidance screen in North Up mode

NOTE: Task Data must be enabled at the *Settings* menu to import a task. See owners manual for more information



5. At the Import Task Data window, step through folders until the Task Data folder displays.

6. At the Task Data folder, select the desired .xml file to import and press the Check button to accept.

7. Drive to the starting position.

8. Press the Check button at the popup window that verifies the task is successfully loaded.

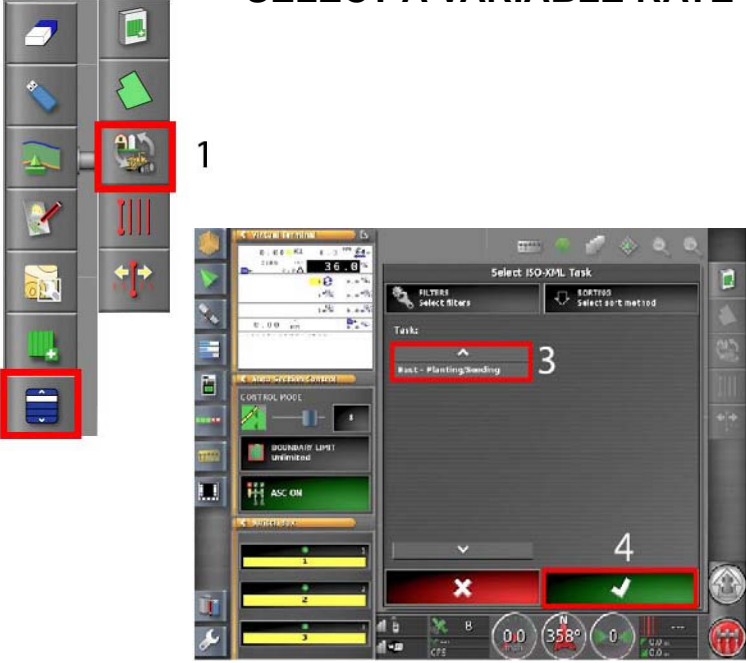


8

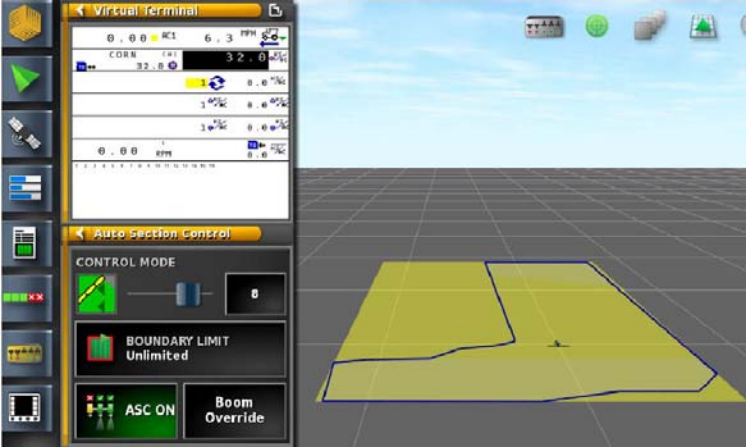
2 SELECT A VARIABLE RATE TASK

A variable rate task can be selected after a successful import.

1. Press the Task Data Menu button to open menu.
2. Press the Select Task Data button to open Select Task window.
3. Select the desired task to load that appear in the Task column. All tasks imported appear in this task column.
4. Press the Check button to accept selected task.



Example of an Imported Variable Rate Map

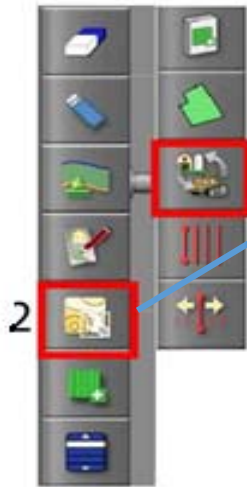


****IMPORTANT: If boundaries and exclusions are not displaying, recheck how the map was created in the farm management software tool.**

3

TASK CONTROLLER SETUP

NOTE: A variable rate task loaded to the terminal must be selected after a successful import.



- 1. Press the Task Data Menu button.
- 2. Press the Configure Variable Rate Control button.



- 3. At the ISO Task Controller Setup screen, select the *Control Target* for the first task data source.
- 4. Select the *Target Element* titled *IntelliAg* to open the device element choices.
- 5. Select the appropriate device element.
- 6. Press the Check button to accept.
- 7. Follow the same steps 3-7 to assign a control target for the next task data source, if required.

- 8. Press the Check button to finalize control targets.
- 9. A *Begin Task Conversion* window displays indicating the prescription map is ready to load. Press the Check button to accept.

4

OPERATION

PRE-OPERATING CHECKLIST

Before beginning a job, verify that the following procedures are completed:

- Variable rate jobs must have variable rate control enabled at the Settings menu
- A loaded implement profile must be configured as an automated section control and a variable rate control implement
- A solid GPS signal is present
- All previous job data cleared before starting a new job

TIP: Enable the Quick Start feature or the Job Assist feature at the Settings/System/Features/Guidance menus to help with stepping through job setup.

TO BEGIN OPERATING

1. With the implement lowered, press the Master Switch button to enable coverage mapping. Coverage mapping is active when the master switch button is green.
2. Drive the vehicle forward. A green bar behind the implement represents the coverage area.
3. Press the Master Switch button again to disable coverage mapping. Coverage mapping is disabled when the master switch button is grey.



5

START AND STOP TASK

Tasks can be manually started and stopped or linked to the master switch. When in task data mode, an extra option is added to the Setup screen to select how tasks can be started and stopped.



To Set the Start/Stop Function:


1. At the Setup menu, select System/ISOBUS/TC.
2. Select the Stop Task button and select one of the following:
 - Manually (must manually start and stop tasks regardless of the master switch state)
 - Manually or master switch (start and stop tasks both manually and via master switch)
3. Press the Check button to accept.



This is what your start stop buttons will look like during operation.



6



CLEARING JOB DATA

Clearing a job resets a job file that already has a coverage map drawn. The coverage map is erased and all recorded job data is reset. A job must be cleared from the system before a new job is created and started.

To Clear a Job:

1. Press the Task Data Menu button
2. Select the Clear Job Data button.
3. Select Yes to clear the current job and reset job totals.

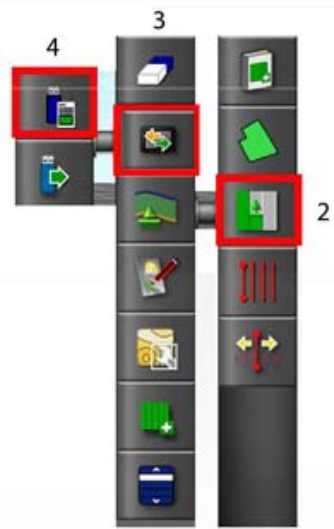
7

EXPORTING JOBS

Once a job is complete, it can be exported to a USB memory device. As Applied and Variable Rate As Applied jobs are exported differently.

IMPORTANT: As applied jobs must be exported individually and should be exported to the USB after the job is complete. An As Applied job must be exported with a GPS signal and within 9 miles (15 km) of the field just completed.

8




AS APPLIED JOB

Implement master switch must be off to export an As Applied job. As Applied job coverage details are exported to a pdf file to create a job report.


To export an As Applied job:

1. Insert USB memory device into USB port.
2. Press the Job Menu button.
3. Press the Data Exchange button.
4. Press the Export Job Report button.



5

7



5. At the Job Export window, select Yes or No based on how the current map layers should be saved.

- Yes alters the colors used in the report map shading so the maximum variation in colors is used to illustrate the applied rates.

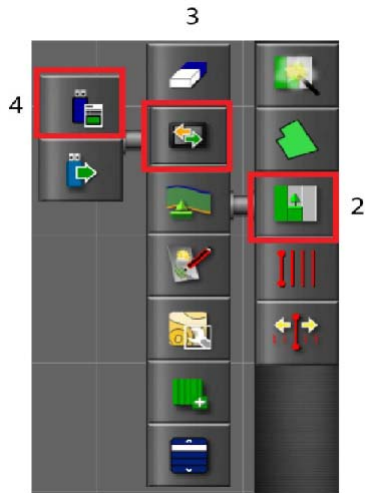
6. Wait for files to export.

7. When finished, press the USB Eject button and remove USB memory device.

8-1

CREATE AN AS APPLIED JOB REPORT

An As Applied coverage map is exported as an .xml file extension that contains coverage details. Job reports can also be exported as .csv files by enabling Per Point Data Logging on the Setup screen (System/Features/Console) before starting the job.



To Create a Job Report:

1. Insert a USB memory device into a USB port.
2. Press the Job Menu button.
3. Press the Data Exchange button.
4. Select the Export Job Report to USB button.
5. Follow steps to proceed with exporting job

Export a Job Report Steps



Job Report Example

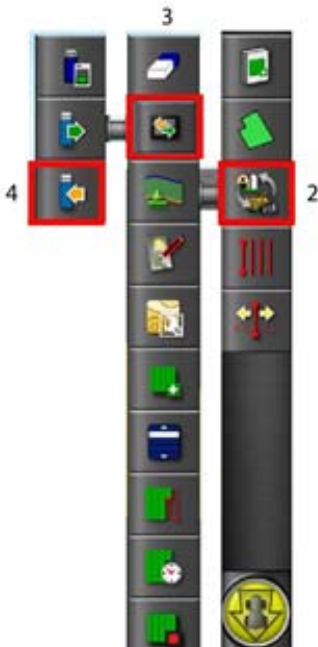
Client:	SMITH
Farm:	SMITH
Field:	WEST
Job:	WEST FIELD
Map Origin:	Latitude: 39°04'23.29"N Longitude: 89°46'23.32"W



9

Exporting Variable Rate Job

Multiple variable rate jobs can be exported at the same time to a USB unlike an As Applied job.

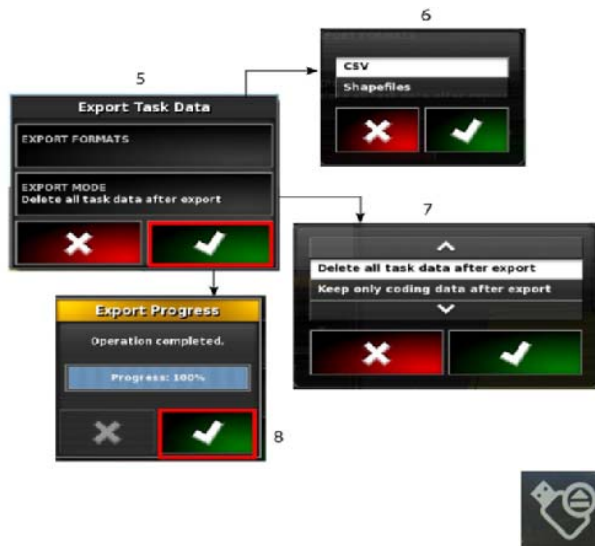


To Export a Variable Rate Job:

1. Insert USB memory device into USB port.
2. Select the Task Data Menu button
3. Press the Data Exchange button.
4. Select the Export Task Data button.

5. At the Export Task Data window, press the Export Formats button.

6. Select the type of file to export and press the Check button to accept.
– CSV files– Shape files



7. Press the Export Mode button to select what happens to data after export and press the Check button to accept.
– *Delete all task data after export* clears all data from the terminal and the terminal is no longer in task data mode.
– *Keep only coding data after export* deletes tasks from the terminal but customer, farm, field, worker, product, and implement data is retained. The console is still in task data mode.

8. After a successful export, press the Check button to complete.

9. Remove USB memory device.

****Disclaimer****

-Any and all information that was presented in this guide can be found in more detail in the owners manual and on our website.

-This book is intended to explain and show one how to change or modify settings for daily operation basis and NOT intended for sole operation of your planter.

-Please contact your dealer for complete set-up, calibration, and operation of your YP planter.

