

Assembly Instructions



3-Point Bedded Irrigation

Used with:
• 3-Point Drills

! When you see this symbol, the subsequent instructions and warnings are serious - follow without exception. Your life and the lives of others depend on it!

Before You Start

These option assembly instructions contain only information on assembling the attachment to the main unit. A detailed Operator's Manual was supplied with the main unit when it was purchased. For more specific information on safety concerns refer to the Operator's Manual. Also included in the Operator's Manual is important information on operation, adjustment, troubleshooting, and maintenance for this attachment (some of these sections do

not apply to all options).

A separate Parts Manual for replacement parts can be purchased from your dealer. Have model and serial numbers handy when placing an order.

Starting on page 5 is a detailed listing of parts included in these kits. Use this list as a checklist to inventory parts received.

Assembly Instructions

Opener Mounting and Gauge Wheel Installation

Refer to Figure 1-1:

1. Determine the row spacing of your drill: 6", 7", 7 1/2" or 10".
2. Find the layout for your drill from one of the 4 views below.
3. The centerline of the tire is determined by the "Beds" (60", 40", or 30" you are using).
4. The special bedded drop brackets are installed over each bed as shown. If the opener lands in the bottom of the bed, the front pivot bolt (#6 Fig: 1-5) should be installed in the bottom hole. If the opener runs in the side of the bed, bolt (#6 Fig:1-5) should be installed in the middle hole.

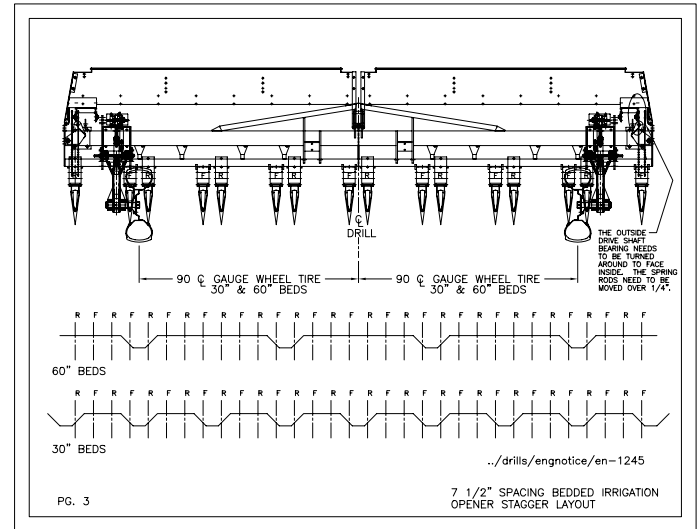
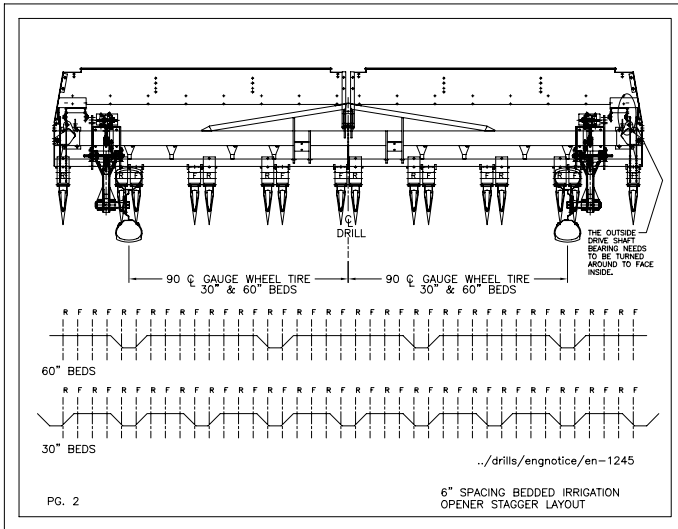
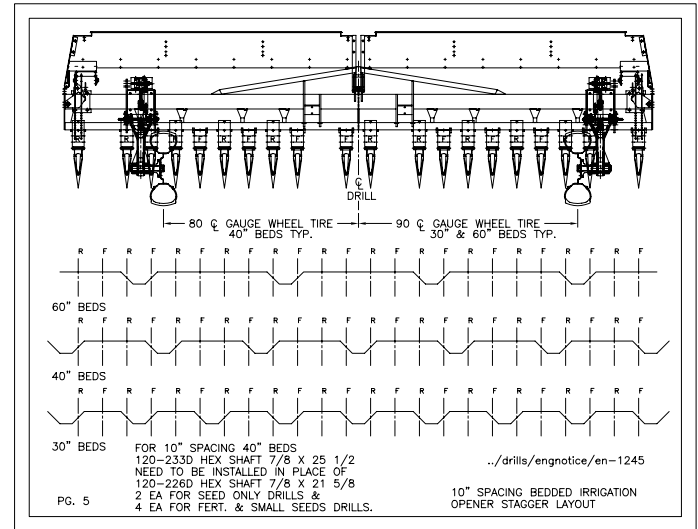
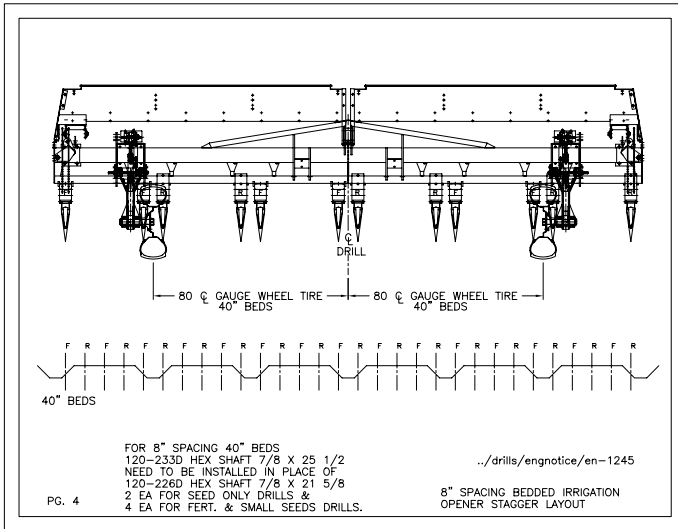


Figure 1-1

Assembly Instructions

Gauge Wheel Adjust Link Assembly

Refer to Figure 1-2:

Assemble the gauge wheel adjust link into the bottom hole of the gauge wheel mount. set the adjust link length to the $18 \frac{3}{16}$ dimension shown. any further adjustments that may need to be made can be done by loosening the jam nut on the top clevis of the adjust link and lengthening or shortening the adjust link as needed. after all adjustments have been made check the centers of the adjust link clevises to make sure they are the same & then tighten the jam nut.

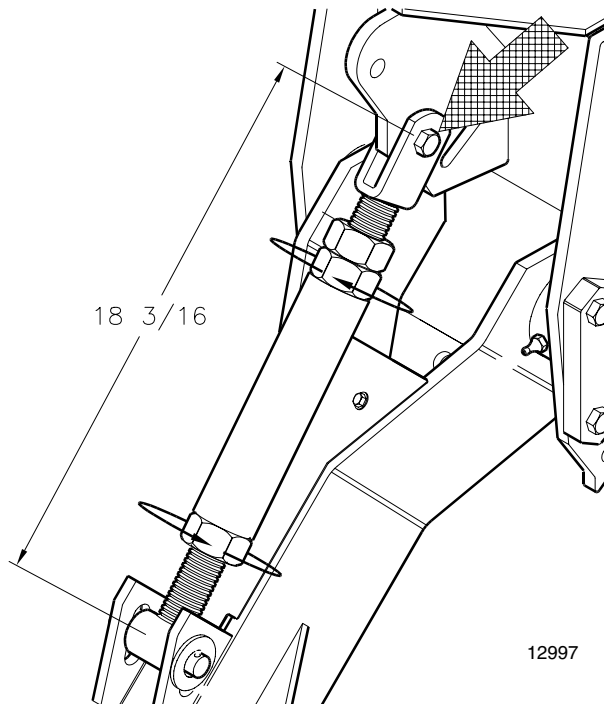


Figure 1-2

Opener mounting instructions

Refer to Figure 1-5:

1. Assemble the rear mount drop bracket (#2) onto the drill frame using a 1/2-13 u-bolt (#3) two 1/2 lock washers (#4) & two 1/2-13 hex nuts (#5) as shown.

(note: the front mount drop bracket (#1) mounts to the under side of the frame 3 x 3 tube, & the u-bolts go in from the top.)

2. Assemble the straight arm opener (#10) onto the front mount drop bracket (#1), or the rear mount drop bracket (#2) using a 1/2-13 x 5 1/2 carriage bolt (#6), two pivot bushings (#8), pivot pipe (#9), & 1/2-13 hex flanged lock nut (#7).

3. Assemble the bedded irrigation spring rods (#12) onto the straight arm opener (#10) using a 3/8-16 x 3 5/8 flanged bolt (#24), & 3/8-16 hex flanged lock nut (#23). Place the spring w-clips (#11) into the bedded irrigation spring rods (#12) as shown. Assemble the compression springs (#13) onto the bedded irrigation spring rods.(note: only part of the compression springs are shown for clarity).

4. Assemble the spring rod casting (#18) onto the top of the bedded irrigation spring rods (#12) & secure in place with a 1/4-20 x 3/4 hex bolt (#14), two 1/4 lock washers (#15), & a 1/4-20 hex nut (#16). Place the offset spring rod clip l.h. (#17) & offset spring rod clip r.h. (#19) onto the spring rod casting (#18), & secure onto the drill box using a 3/8-16 u-bolt (#20), two 3/8 lock washers (#21), & two 3/8-16 hex nuts (#22).

W-Clip Placement

Refer to Figure 1-3 & 1-4:

For straight arm openers that are assembled in the bottom set of holes in the bedded irrigation drop brackets, assemble the compression spring w-clip in the holes of the spring rod as shown in fig. 1-2. For straight arm openers that are assembled in the middle set of holes in the bedded irrigation drop brackets, assemble the compression spring w-clip in the holes of the spring rod as shown in fig. 1-3.

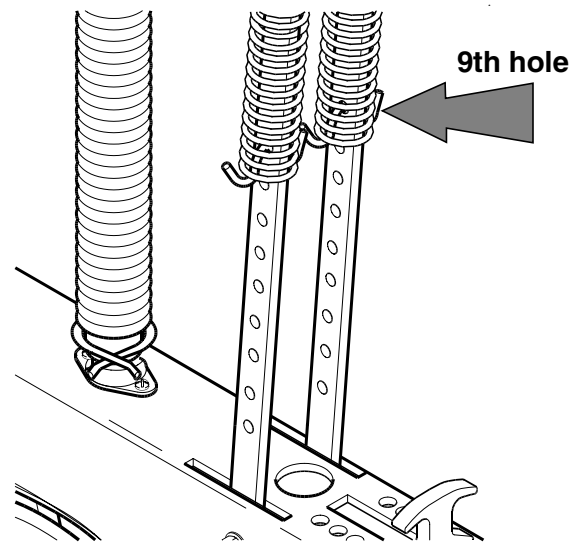


Figure 1-3

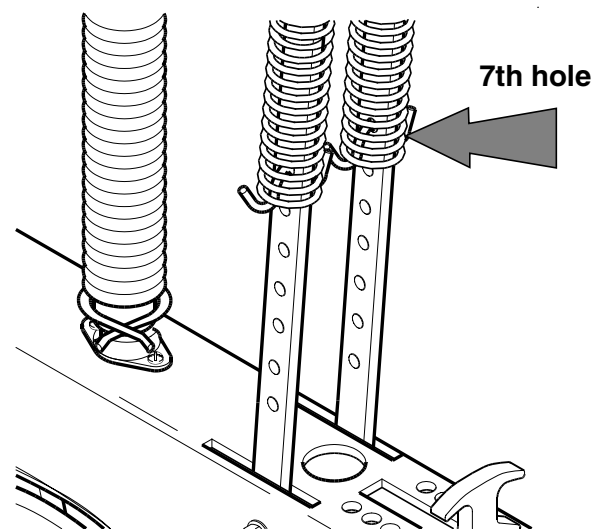
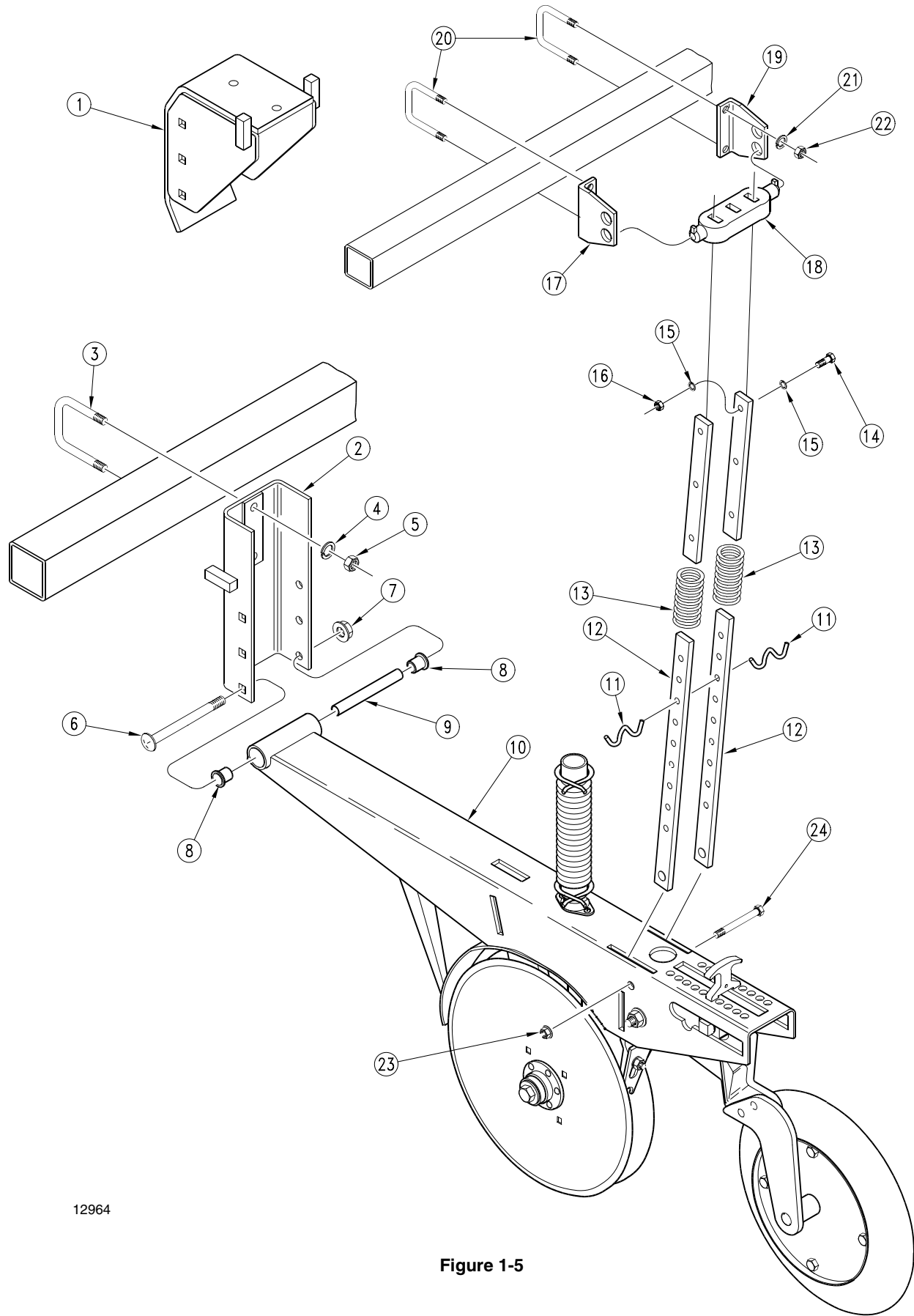


Figure 1-4

Assembly Instructions



12964

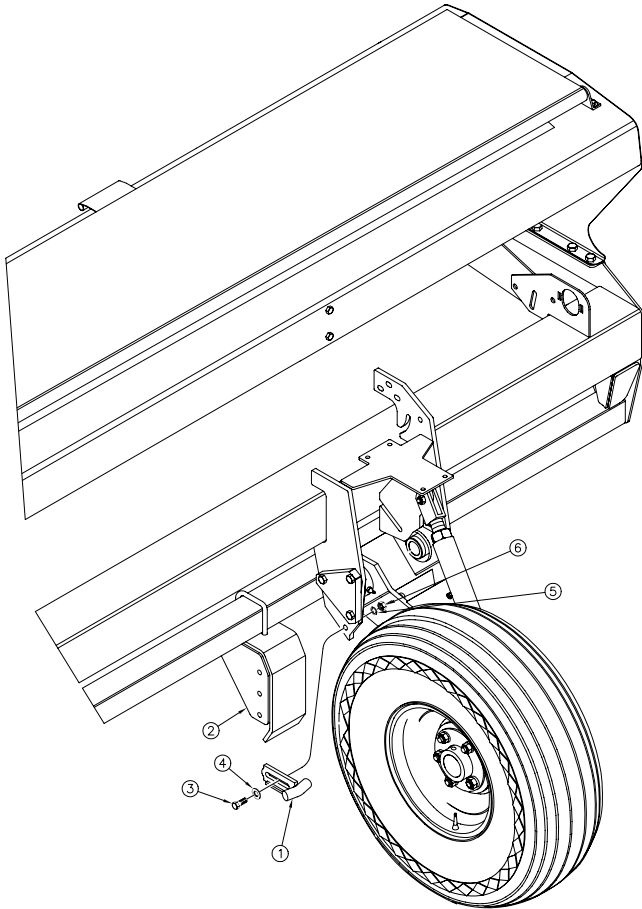
Figure 1-5

Assembly Instructions

Gauge Wheel Brake Assembly

Refer to Figure 1-6:

Due to the gauge wheels having to run in the bedded irrigation furrows during planting, there is a possibility that the gauge wheels can come into contact with the front mount drop brackets (#2) when the drill is raised to turn around in the field. Therefore: it is important to set the gauge wheel brake (#1) using a 1/2-13 hex bolt (#3), 1/2 flat washer (#4), 1/2 lock washer (#5), & 1/2-13 hex nut (#6) in a position that will stop the gauge wheel from coming into contact with the front mount drop bracket (#2), but also allow free rotation of the gauge wheel during planting.



12999

Figure 1-6

121-698A FRONT BEDDED IRRI. ASSY UPDATE*Your Kit Includes:*

Qty.	Part No.	Part Description
1	121-694H	FRONT MOUNT DROP BRACKET WMNT
1	806-066C	U-BOLT 1/2-13 X 3 1/32 X 4
2	121-142D	BEDDED IRRI. SPRING ROD
1	121-128D	OFFSET SPRING ROD CLIP L.H.
1	121-127D	OFFSET SPRING ROD CLIP R.H.
1	121-695H	REAR MOUNT DROP BRACKET WMNT

121-699A REAR BEDDED IRRI. ASSY UPDATE

Qty.	Part No.	Part Description
1	121-695H	REAR MOUNT DROP BRACKET WMNT
1	806-066C	U-BOLT 1/2-13 X 3 1/32 X 4
2	121-142D	BEDDED IRRI. SPRING ROD
1	121-128D	OFFSET SPRING ROD CLIP L.H.
1	121-127D	OFFSET SPRING ROD CLIP R.H.
1	121-695H	REAR MOUNT DROP BRACKET WMNT

Multiple Quantities by the number of assemblies ordered

Great Plains Manufacturing, Inc.

Corporate Office: P.O. Box 5060
Salina, Kansas 67402-5060 USA
