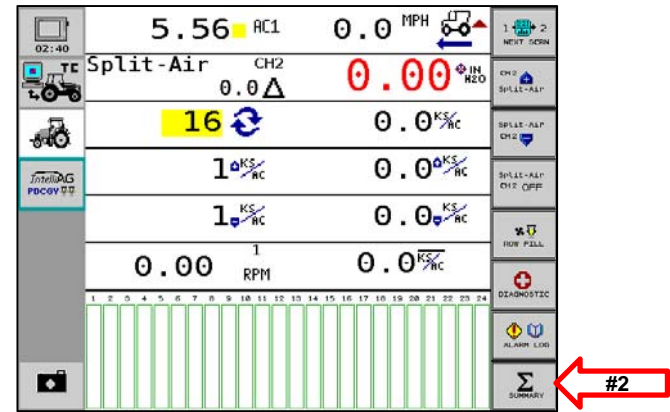
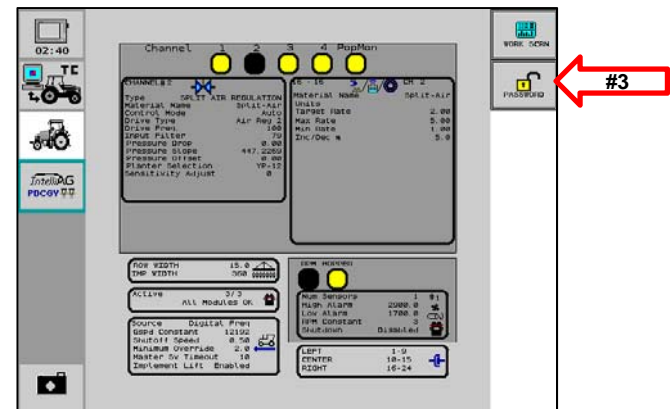


Changing Crops (Ex.-Corn to Beans – Grd. Drive)

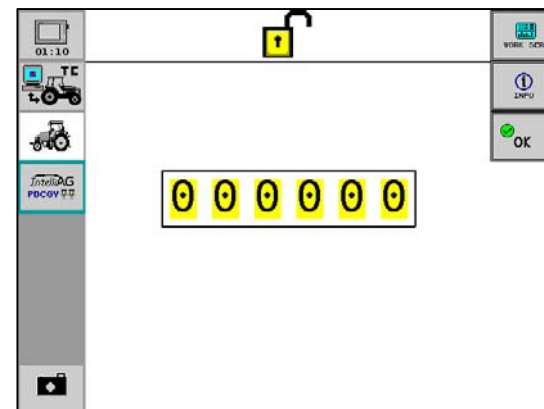
1. Main Work Screen



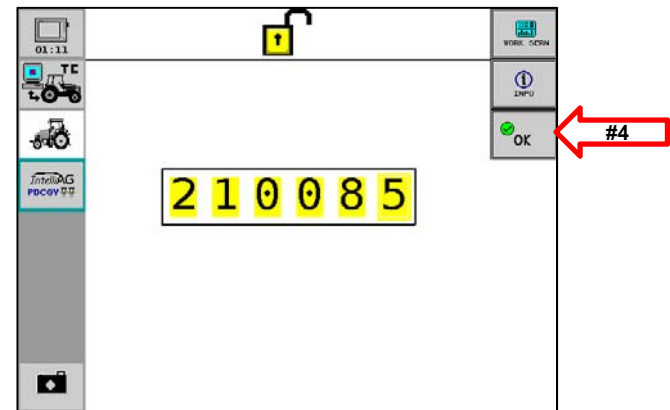
2. Push Summary Button.
(If Already In User Level 2, Skip to Step 6).



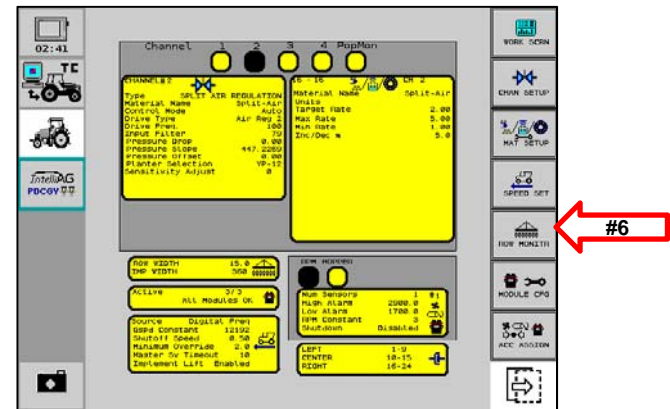
3. Push Password Button



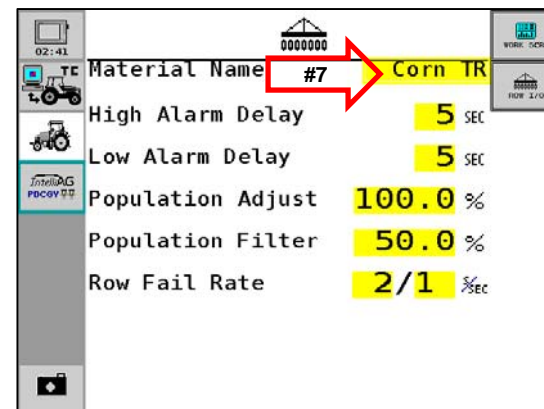
4. Enter 2 + 5 Digit Serial # of WSMT & Push OK.



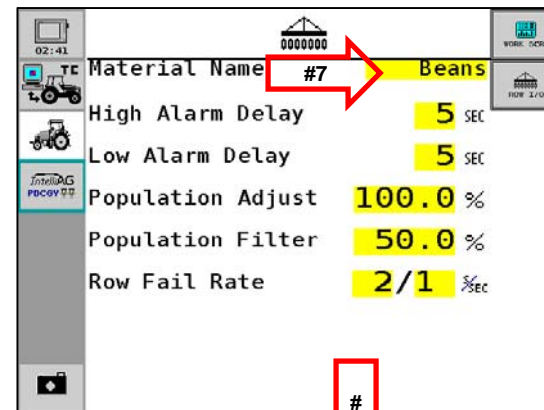
5. Push "ESC" Soft Key to Return to Summary Screen.



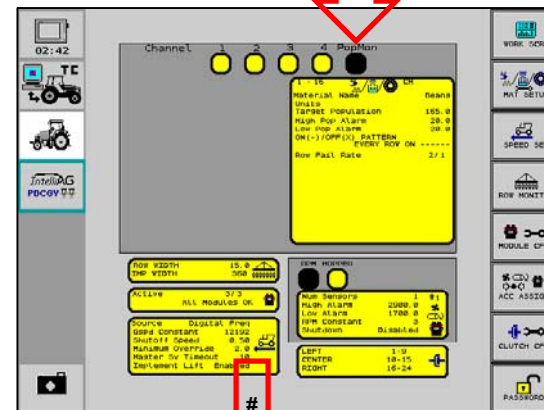
6. Push "Row Monitor" Button on Summary Screen.



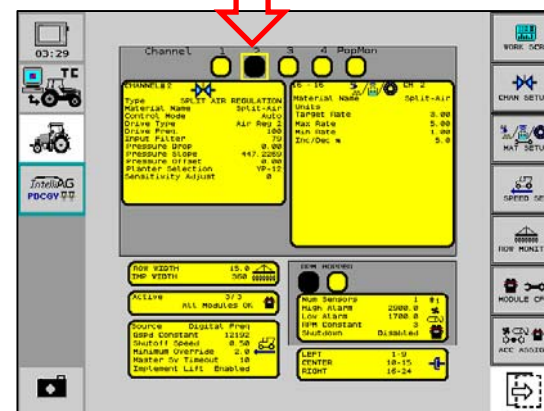
7. Push “Material Name”;
Change to Beans, Then Push
the “ESC” Soft Key



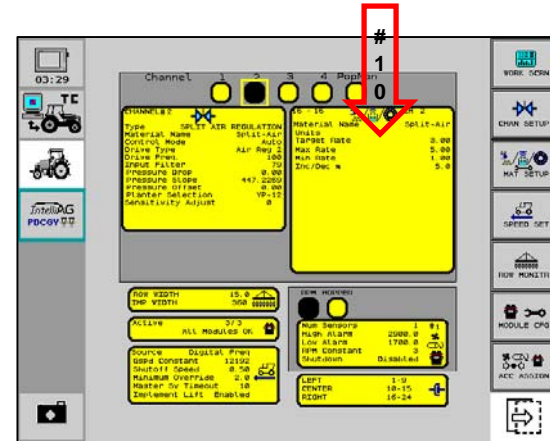
8. Push “PopMon” Button at Top
of Screen to Verify Change.



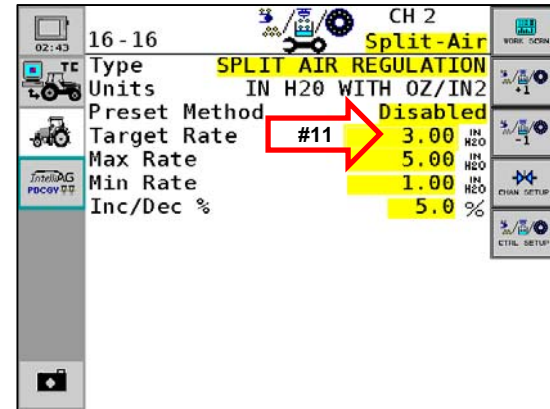
9. Push Channel 2 Button at Top
of Screen.



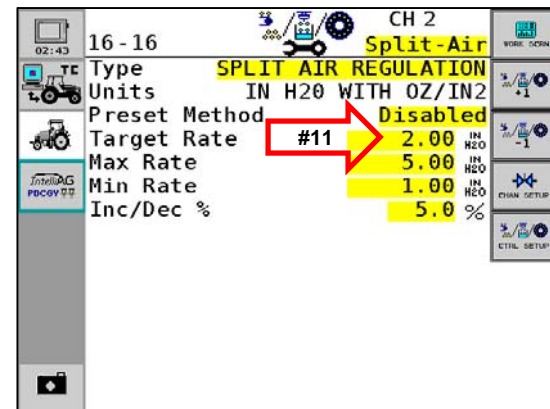
10. Push Channel #2; Material Name” Split-Air



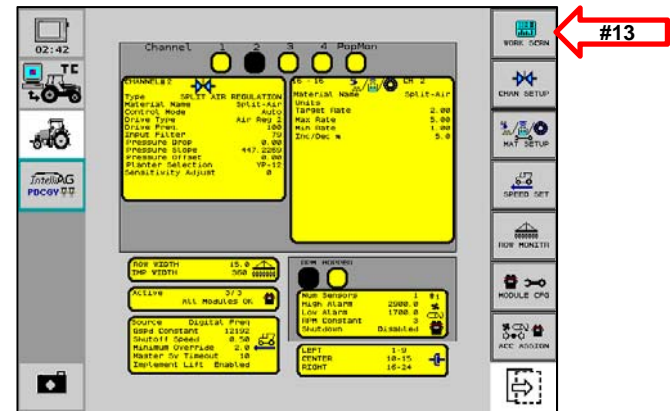
11. Change Target Rate To 2.00. Push The “ESC” Soft Key to Return to Summary Screen



12. Verify Changes in Channel 2 “Material Name



13. Return To Main Work Screen



14. Ready To Plant Beans

