

FLATLINER 300

MAINFRAME FITTINGS

ITEM NO	PT NO	DESCRIPTION
1	----	Mainframe
2	3795	Chisel plough tine
3	4852	Super chisel tine (610 mm underframe) optional
	5138	Super chisel tine (724 mm underframe) optional
4	3796	Tine clamp
5	4053	Plate, Tine clamp retaining
6	2510	Bolt, Clamp retaining M16
	1358	Nut
	2602	Washer, Flat
	2038	Washer, Spring
7	0014	Bolt, M24 pivot
	0717	Nut
	2593	Washer, Spring
8	1901	Bolt, M16 shear
	1358	Nut
	2602	Washer, Flat
	2038	Washer, Spring
9	4528	Low Draught Point (25 mm)
9A	3751	Weld-on replacement wearing tip
10	0904	Pin, Point roll
11	4851	Reversible point
12	3320	Lower link pin cat 3
	3320	Lower link pin cat 2
13	3318	Toplink pin cat 2
	3218	Toplink pin cat 3
14	3222	Bolt, Crumbler pivot M30
	2011	Nut
	2608	Washer, Flat
	2598	Washer, Spring
15	0449	Pin, Adjuster link

NEW LOWER LINK PINS 96 MACHINES ONWARDS (NI) P6798
 WELD ON TOPHAT BUSHES TO SUIT PULL POINTS (NI) P6619

FLATLINER 300 MAINFRAME

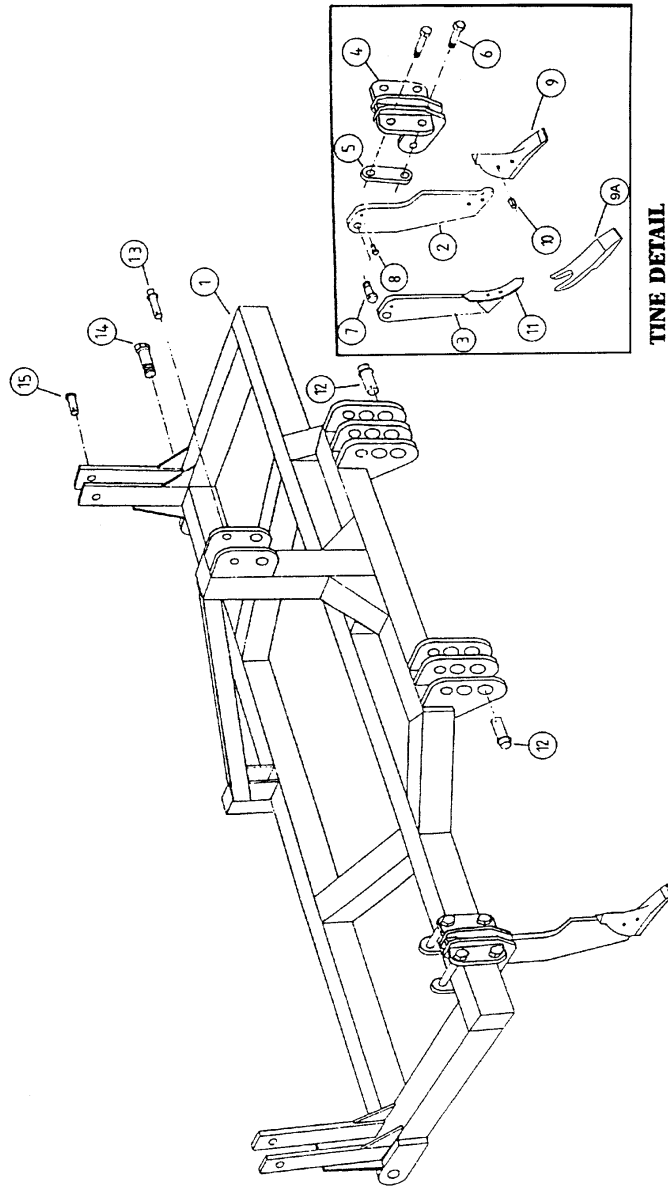
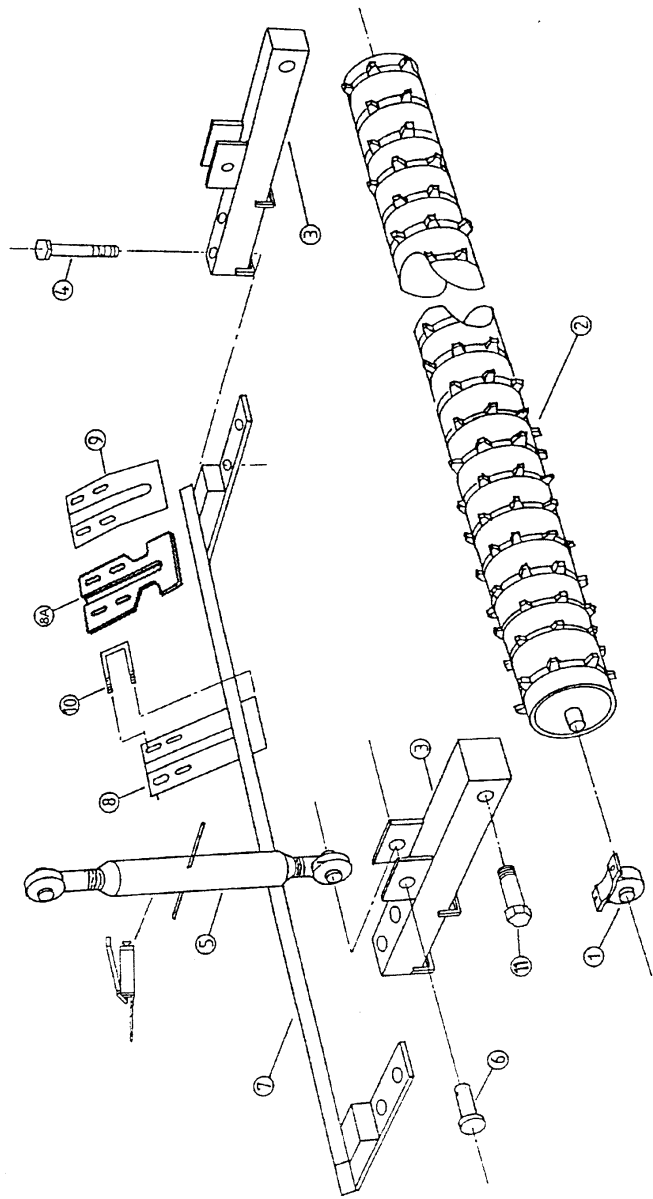


Fig 1 Mainframe fittings

FLATLINER 300



SM1362

SCRAPED CRUMBLER ASSEMBLY

Fig 2 Scraped crumbler assembly

FLATLINER 300

SCRAPED CRUMBLER ASSEMBLY

† Not illustrated

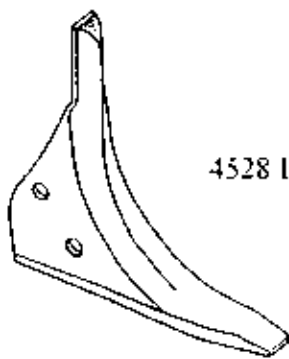
ITEM NO	PT NO	DESCRIPTION
1	0950	Crumbler bearing
2	-----	Scraped crumbler reel (state width and dia)
3	3275	Crumbler arm
4	0053	Bolt, Bearing M16
	1358	Nut
	2602	Washer, Flat
	2038	Washer, Spring
5	0157	Crumbler toplink adjuster
6	0449	Pin, Adjuster
7	-----	Scraper rail (state width)
8	1844	Crumbler scraper - straight
8A	1844B	Crumbler scraper - scalloped
9	2729	Crumbler scraper - angled
10	1360	Bolt, Scraper "U" M12
	2007	Nut, Lock
	2601	Washer, Flat
11	† 3222	Bolt, Crumbler pivot M30
	2011	Nut
	2608	Washer, Flat

STANDARD CHISEL TINE LOW DRAUGHT POINTS

The new low draught points now have a modified nose, which reduces draught requirements and improves penetration. The points also have a thicker shin which improves wearing life. A weld on tip is available to extend life of point, however this operation should only be carried out once due to the degree of wear in the remainder of point.

SUPER CHISEL TINE

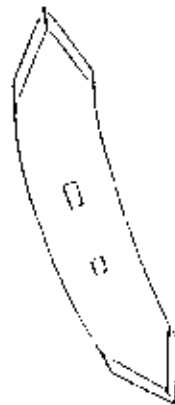
These points are reversible to double their useful life. Replace before tine itself begins to engage soil.



4528 LOW DRAUGHT POINT



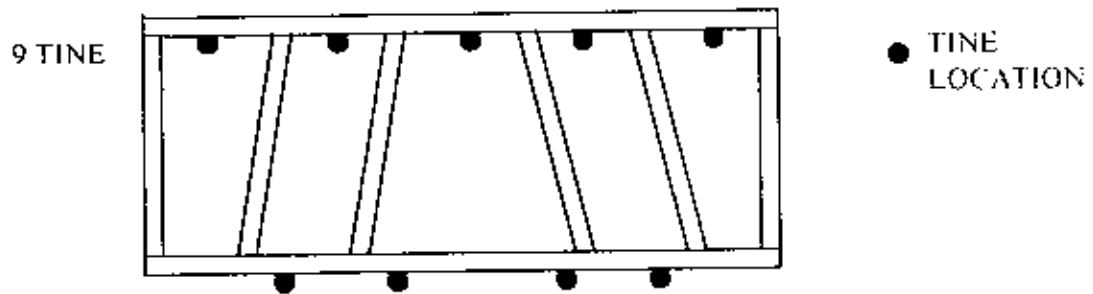
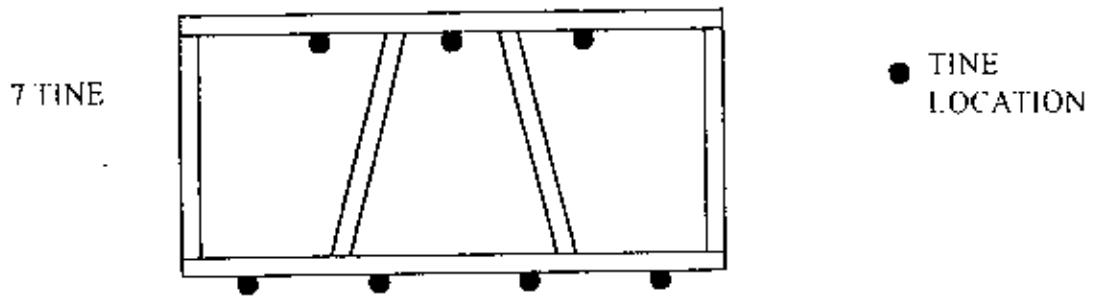
3751 WELD ON REPLACEMENT TIP



4851 REVERSIBLE POINT

FLATLINER 300 TINE LAYOUT

SIMBA INTERNATIONAL



DIRECTION OF TRAVEL IN BOTH CASES



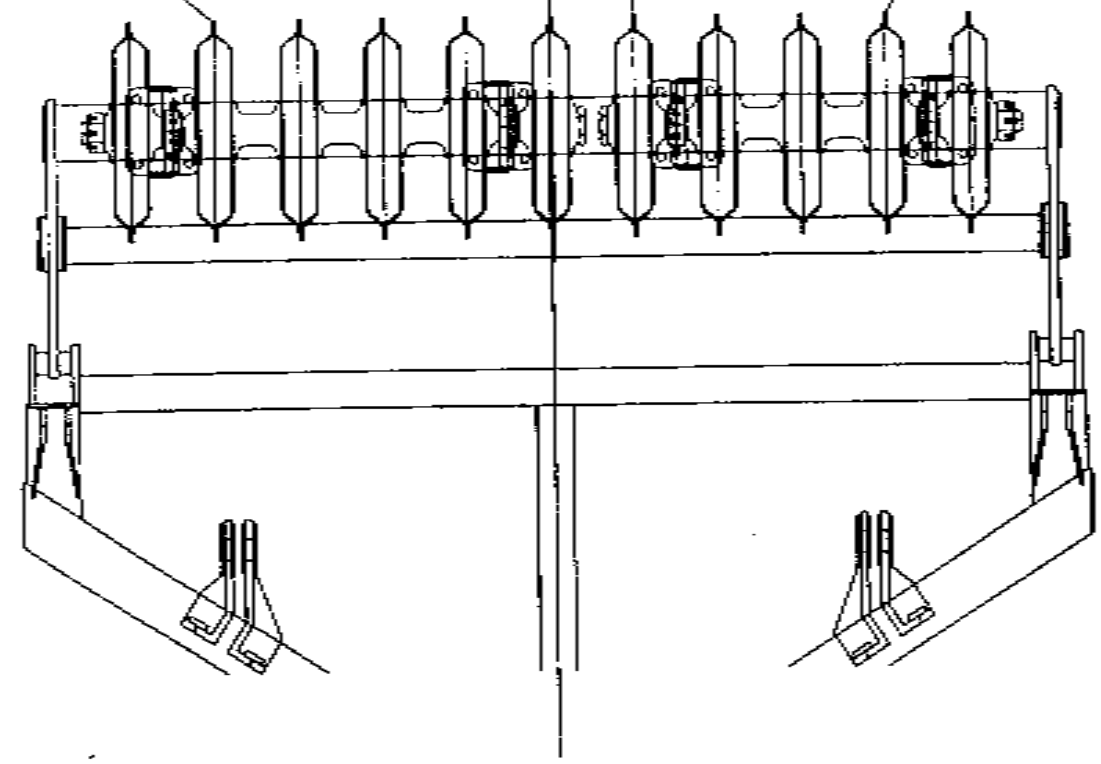
6 DISC RING AXLE
REFER TO AS0519

MACHINE



230

5 DISC RING AXLE
REFER TO AS0517



FLATLINER 500 - 3.0m DISC RING AXLE LOCATION

DRAWN	PART NUMBER	FROM SERIAL NO.	TO SERIAL NO.	ISSUE	DRAWING NO.
06/12/99				1	AS0616
UPDATED					
XX/XX/XX					

7 DISC RING AXLE
REFER TO AS0521

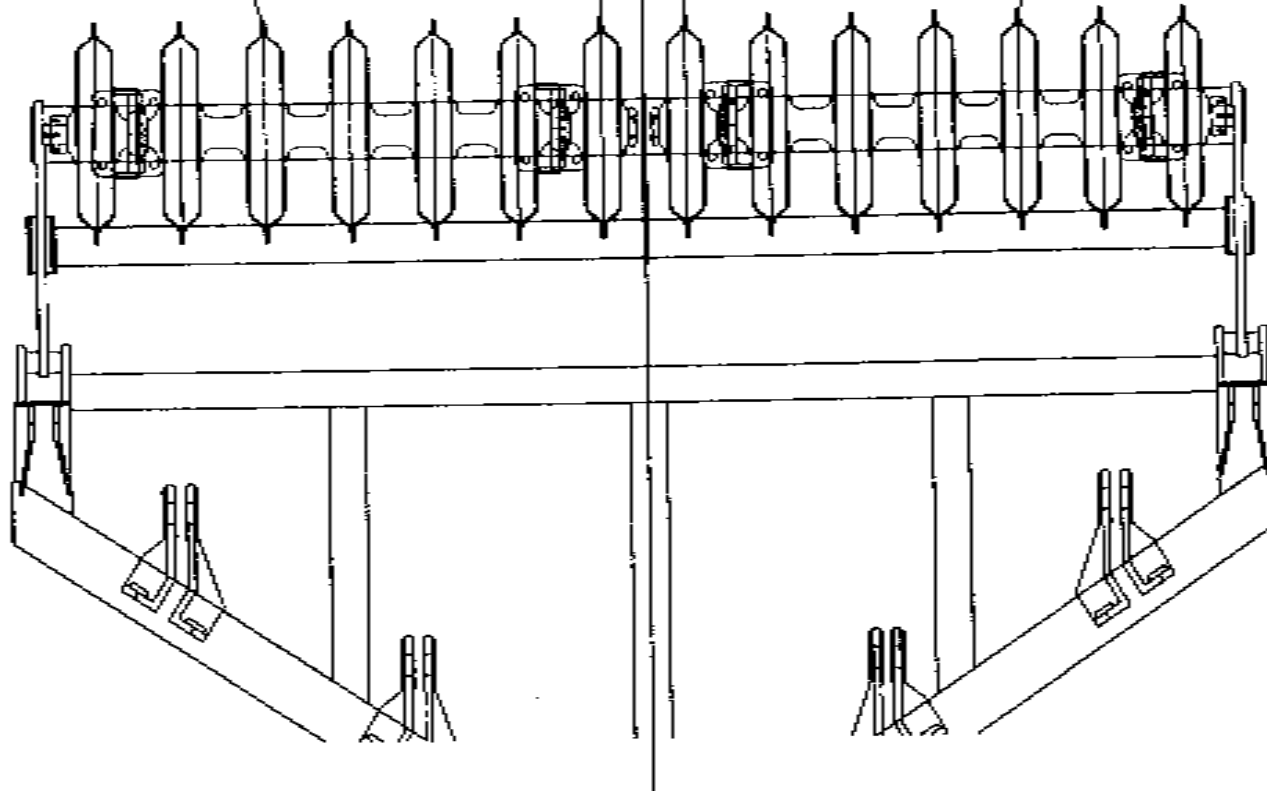
MACHINE

G

115

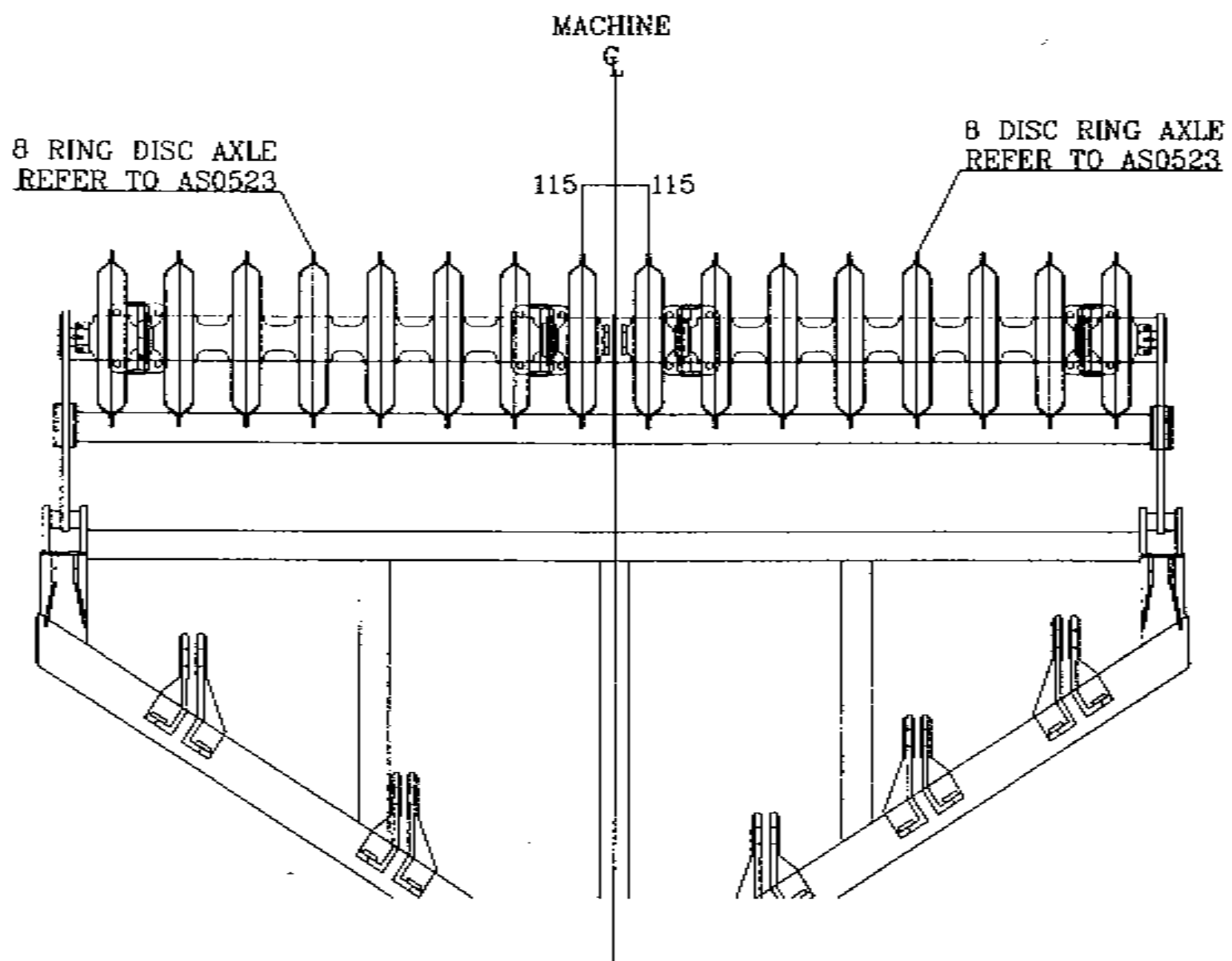
115

7 DISC RING AXLE
REFER TO AS0521



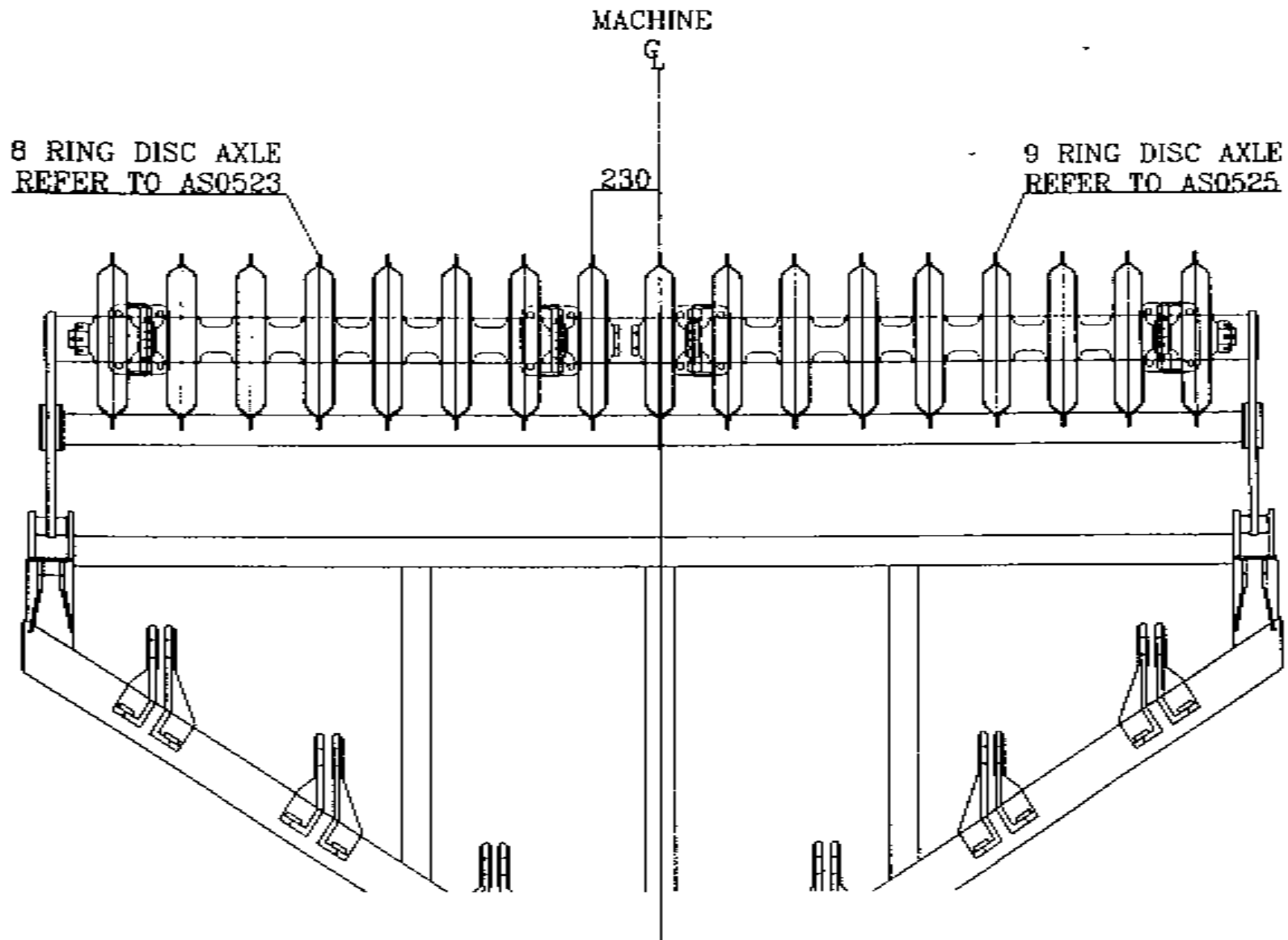
FLATLINER 500 - 3.5m DISC RING AXLE LOCATION

DRAWN 06/12/99 UPDATED	PART NUMBER	FROM SERIAL NO.	TO SERIAL NO.	ISSUE	DRAWING NO.
				1	AS0617



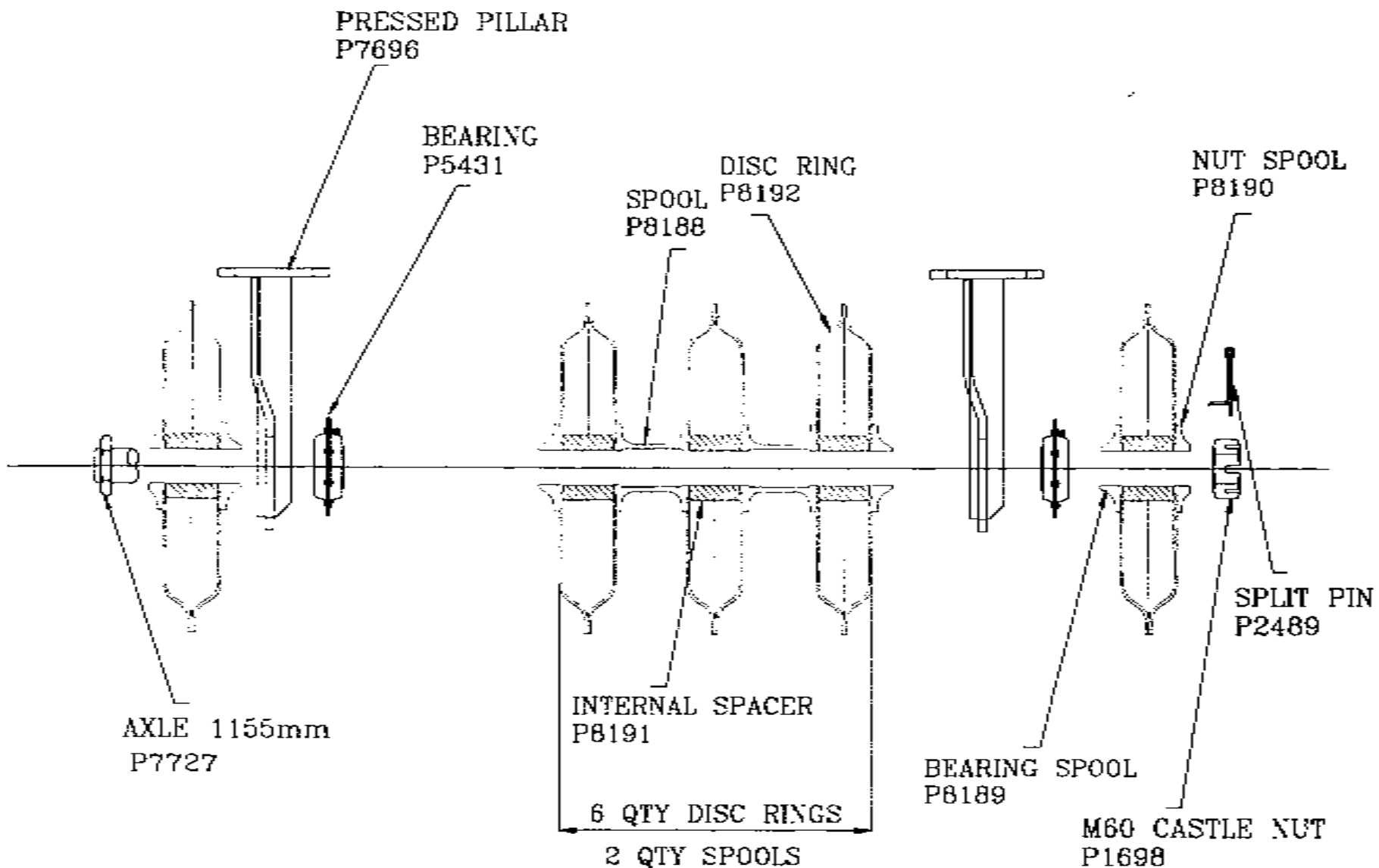
FLATLINER 500 - 3.8m DISC RING AXLE LOCATION

DRAWN 08/12/99 UPDATED XX/XX/XX	PART NUMBER	FROM SERIAL NO.	TO SERIAL NO.	ISSUE 1	DRAWING NO. AS0618
--	-------------	-----------------	---------------	------------	-----------------------



FLATLINER 500 - 4.2m DISC RING AXLE LOCATION

DRAWN 08/12/99 UPDATED 08/08/00	PART NUMBER	FROM SERIAL NO.	TO SERIAL NO.	ISSUE	DRAWING NO.
				1	AS0619



PRESS - 5 DISC RING AXLE LAYOUT (INBOARD PILLAR)

DRAWN
06/08/88
UPDATED

PART NUMBER

FROM SERIAL NO.

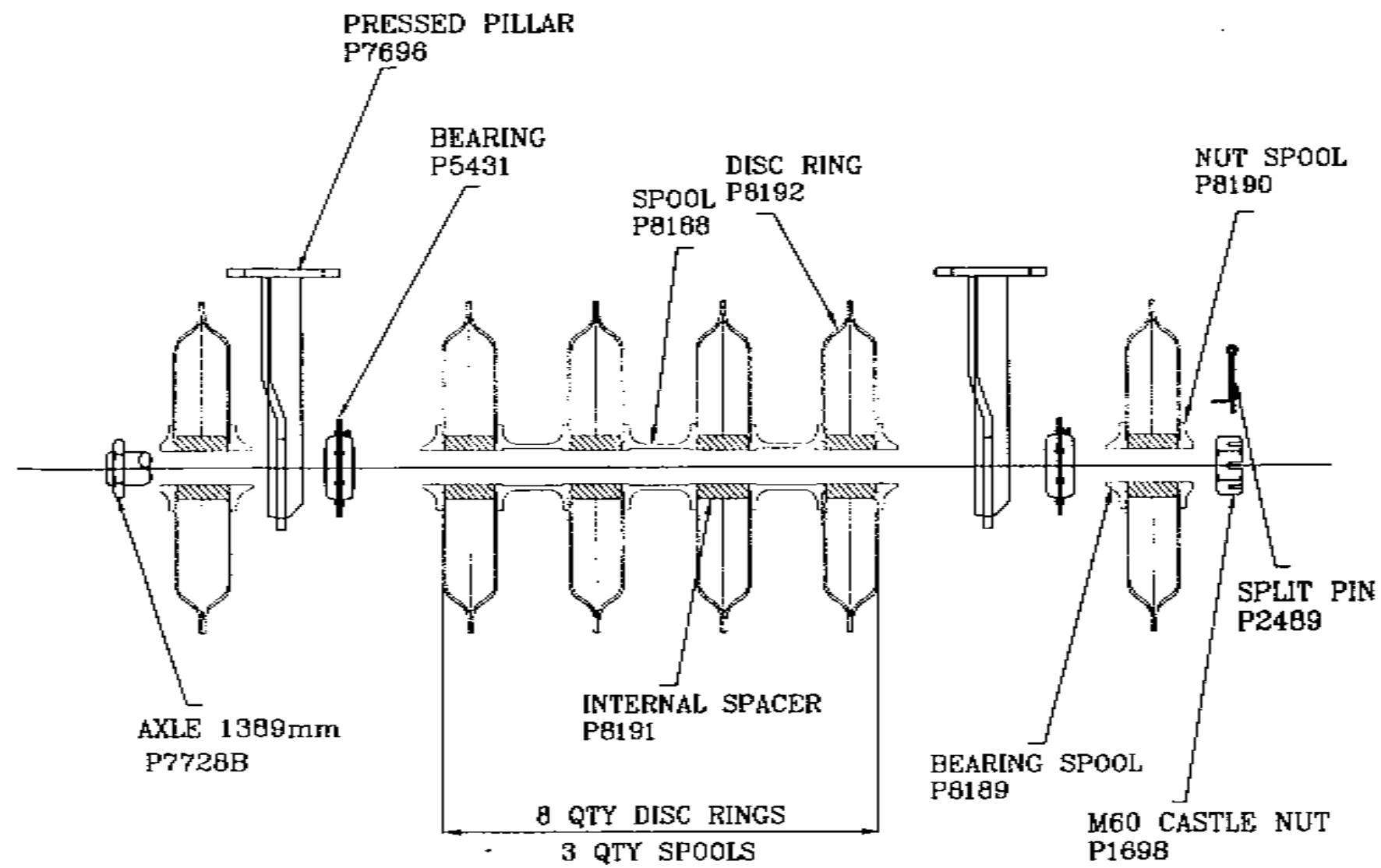
TO SERIAL NO.

ISSUE

DRAWING NO.

1

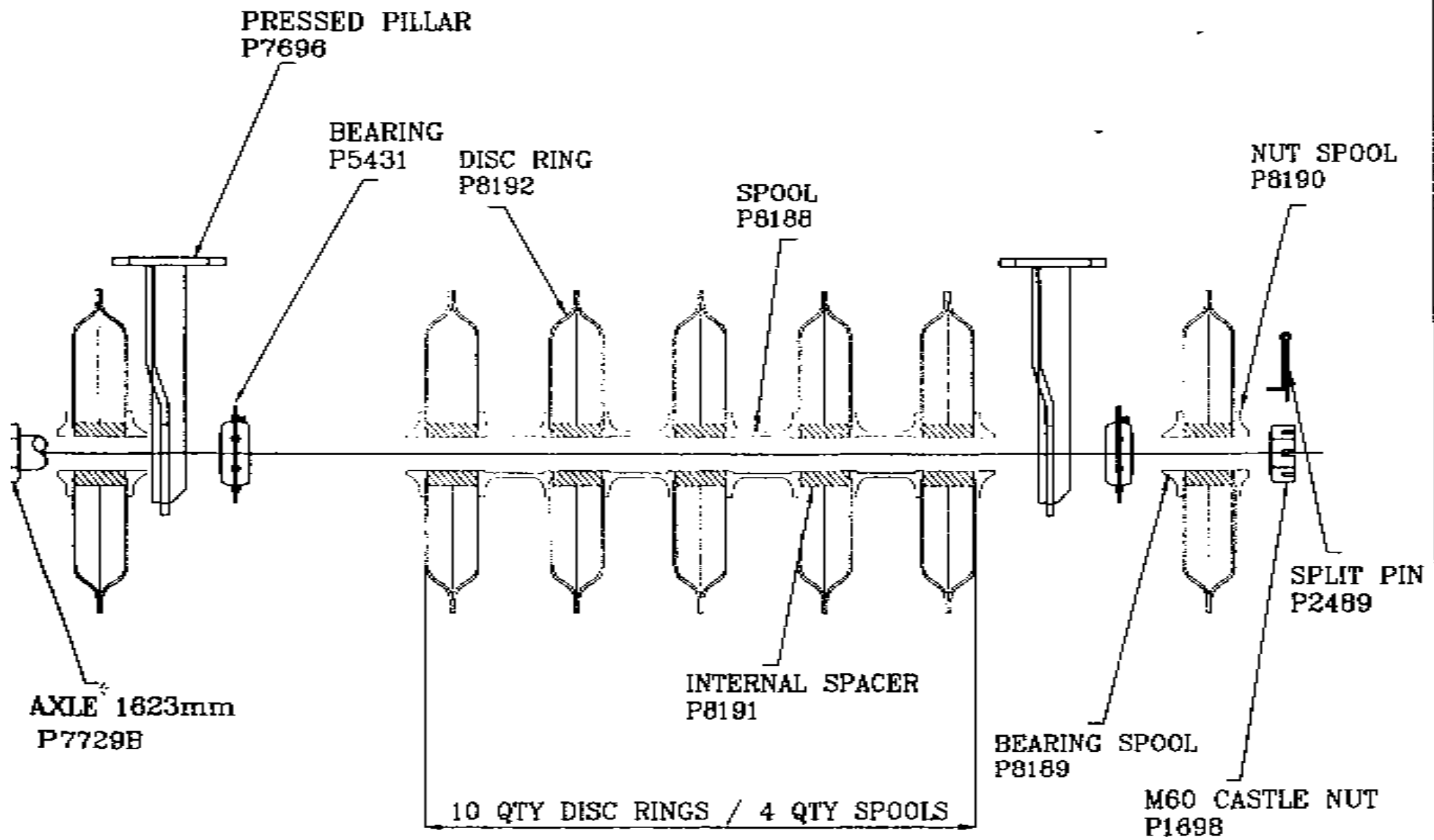
AS0517



2/11/00 AXLE LENGTH CHANGED FROM 1365 TO 1389mm. PT NO. NOW P7728B

RESS - 6 DISC RING AXLE LAYOUT (INBOARD PILLAR)

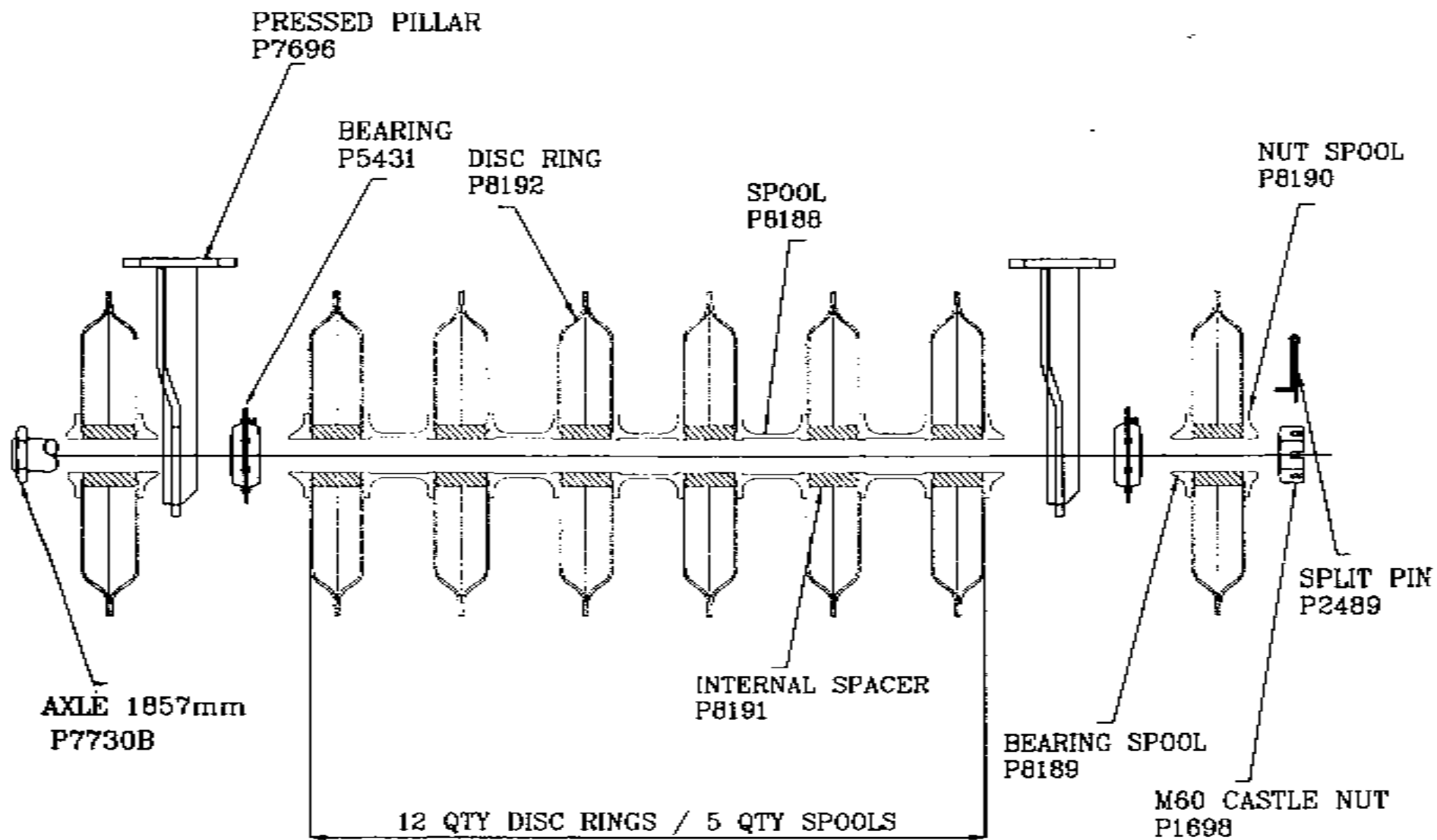
DRAWN 06/06/84 UPDATED 02/11/00	PART NUMBER	FROM SERIAL NO.	TO SERIAL NO.	ISSUE	DRAWING NO.
				B	AS0519



2/11/00 AXLE LENGTH CHANGED FROM 1616 TO 1623mm. PT NO NOT P7729B

PRESS - 7 DISC RING AXLE LAYOUT (INBOARD PILLAR)

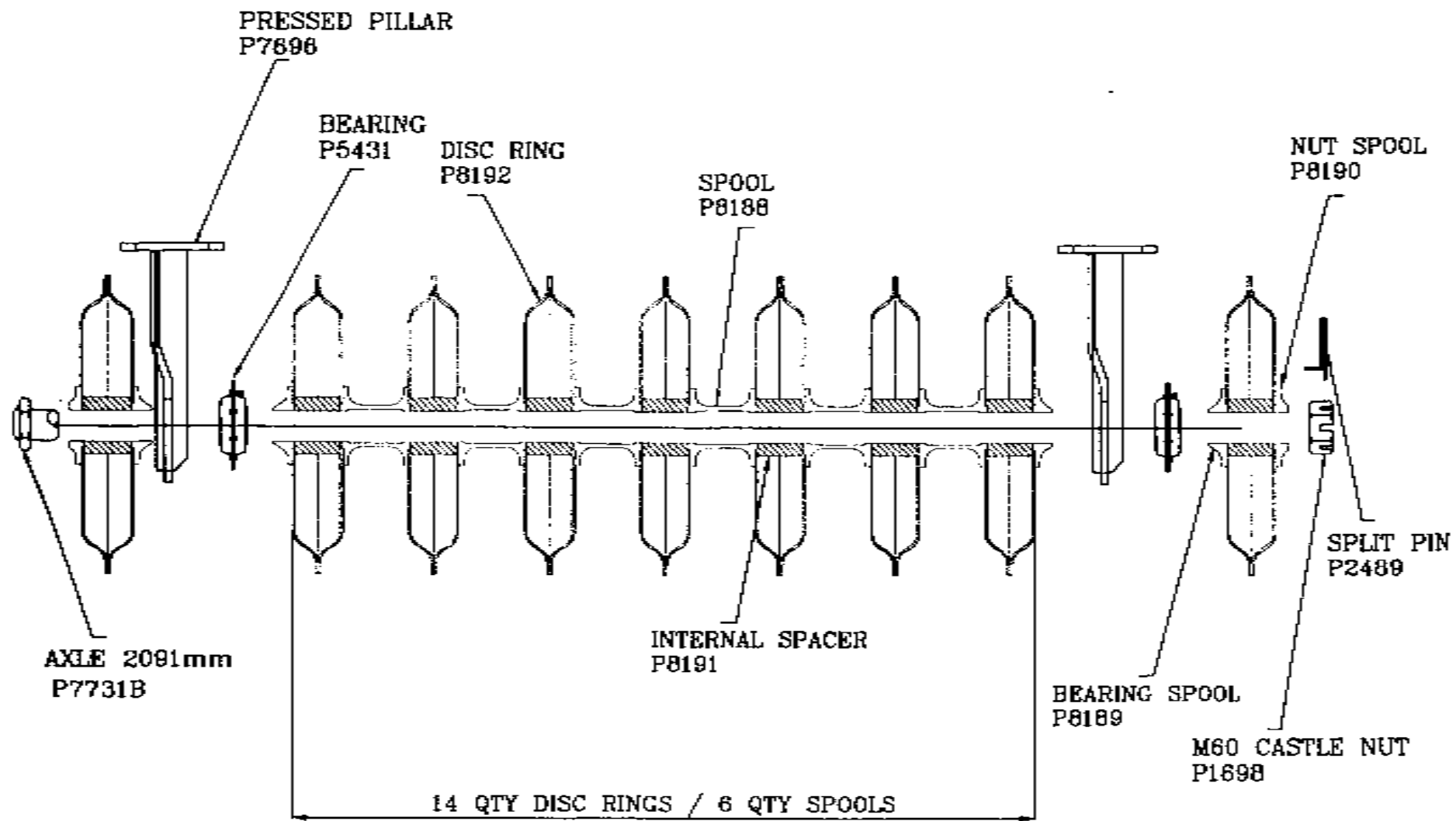
DRAWN 08/08/98	PART NUMBER	FROM SERIAL NO.	TO SERIAL NO.	ISSUE	DRAWING NO.
UPDATED 02/11/00				B	AS0521



2/11/00 AXLE LENGTH CHANGED FROM 1845 TO 1857mm. PT NO NOW P7730B

PRESS - 8 DISC RING AXLE LAYOUT (INBOARD PILLAR)

DATE	PART NUMBER	FROM SERIAL NO.	TO SERIAL NO.	ISSUE	DRAWING NO.
08/08/98				B	AS0523
02/11/00					

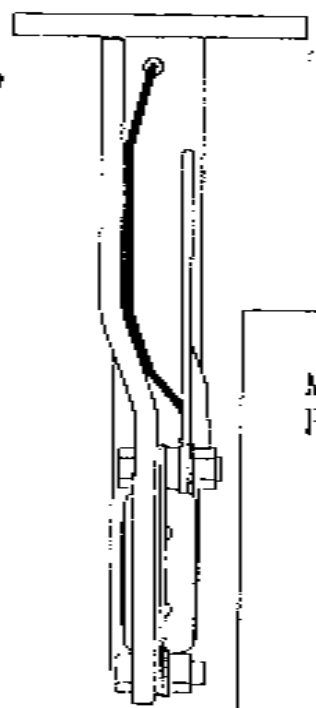
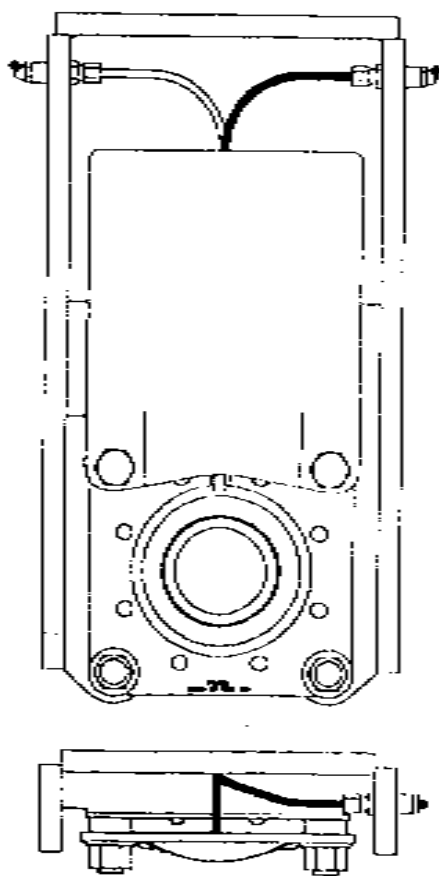


2/11/00 AXLE LENGTHS CHANGED FROM 8073 TO 2081mm. PT NO NOW P7731B

PRESS - 9 DISC RING AXLE LAYOUT (INBOARD PILLAR)

DATE	PART NUMBER	FROM SERIAL NO.	TO SERIAL NO.	ISSUE	DRAWING NO.
06/05/98				B	AS0525
02/11/00					

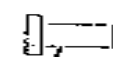
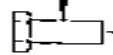
FIT TO SUIT FRONT
OR REAR GREASING



M16x60
P0057

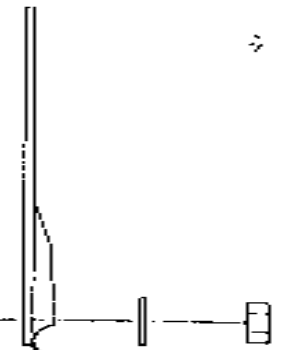
M16x50
P1704

45° NIPPLE
PILLAR
P7696
REMOTE GREASER
P8276

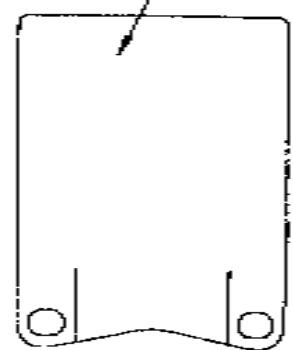


SPACER
P829B

BEARING
P5431



GUARD
P8450



BEARING PILLAR REMOTE GREASE FACILITY TYPE

DRAWN 1/2/68 UPDATER	PART NUMBER	FROM SERIAL NO	TO SERIAL NO	ISSUE	DRAWING NO.
				A	AS0470

M16 LOCK NUT
P2008

SCRAPER BLADE
DISC RINGS
P8607 - SHORT

SCRAPER BLADE
DISC RINGS
P8601 - LONG

M16 FLAT WASHER
P2602

SCRAPER BLADE
CAST RINGS
P7738

M16 U BOLT
P1613

M12 LOCK NUT
P2007

M12x40
P0003

M12 FLAT WASHER
P4179

SCRAPER STEM
P7736

CULTIPRESS - SCRAPER ASSEMBLY

DRAWN 20/4/97 UPDATED 30/10/97	PART NUMBER	FROM SERIAL NO	TO SERIAL NO	ISSUE	DRAWING NO.
		8125		2	AS0352