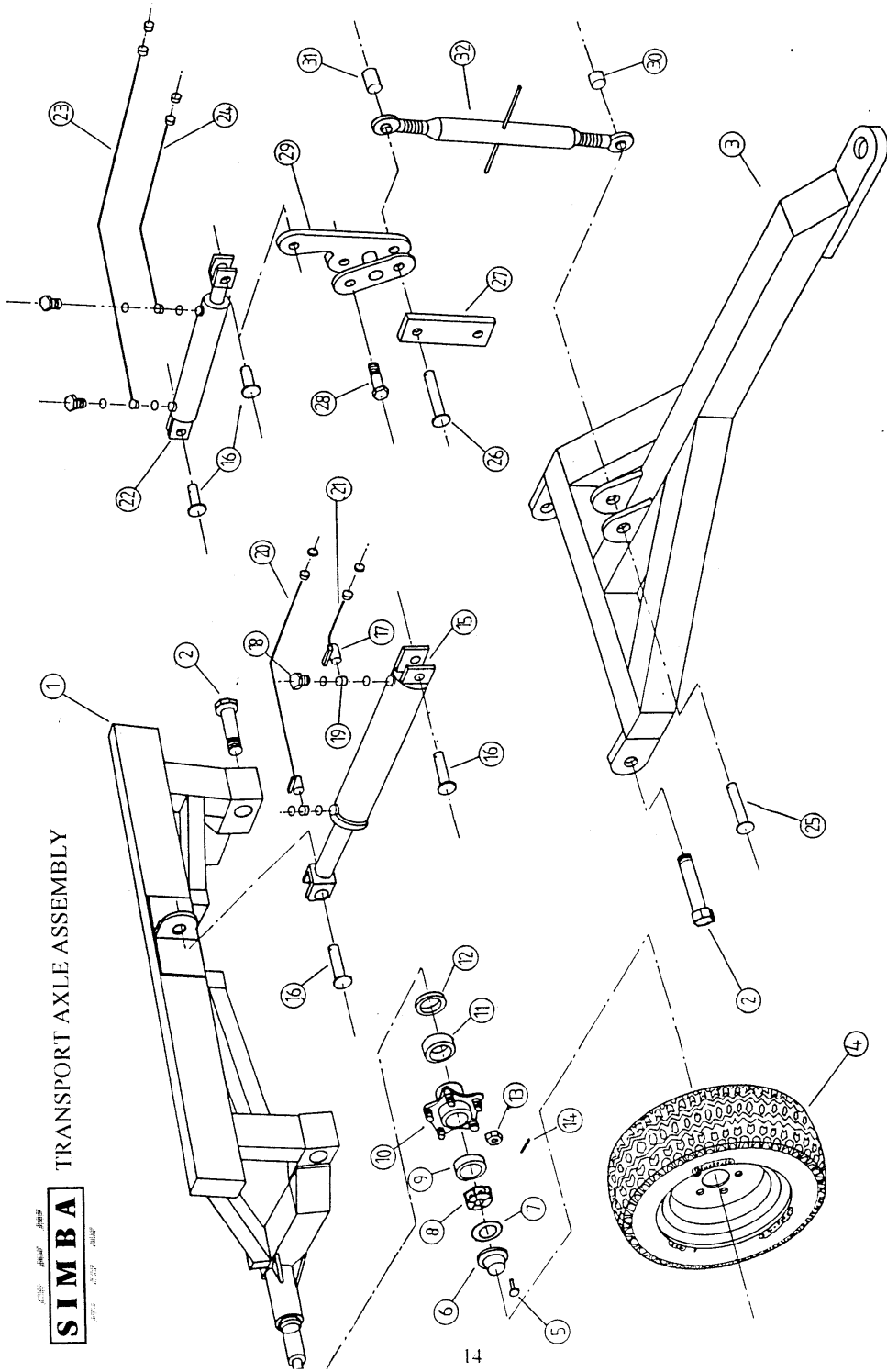


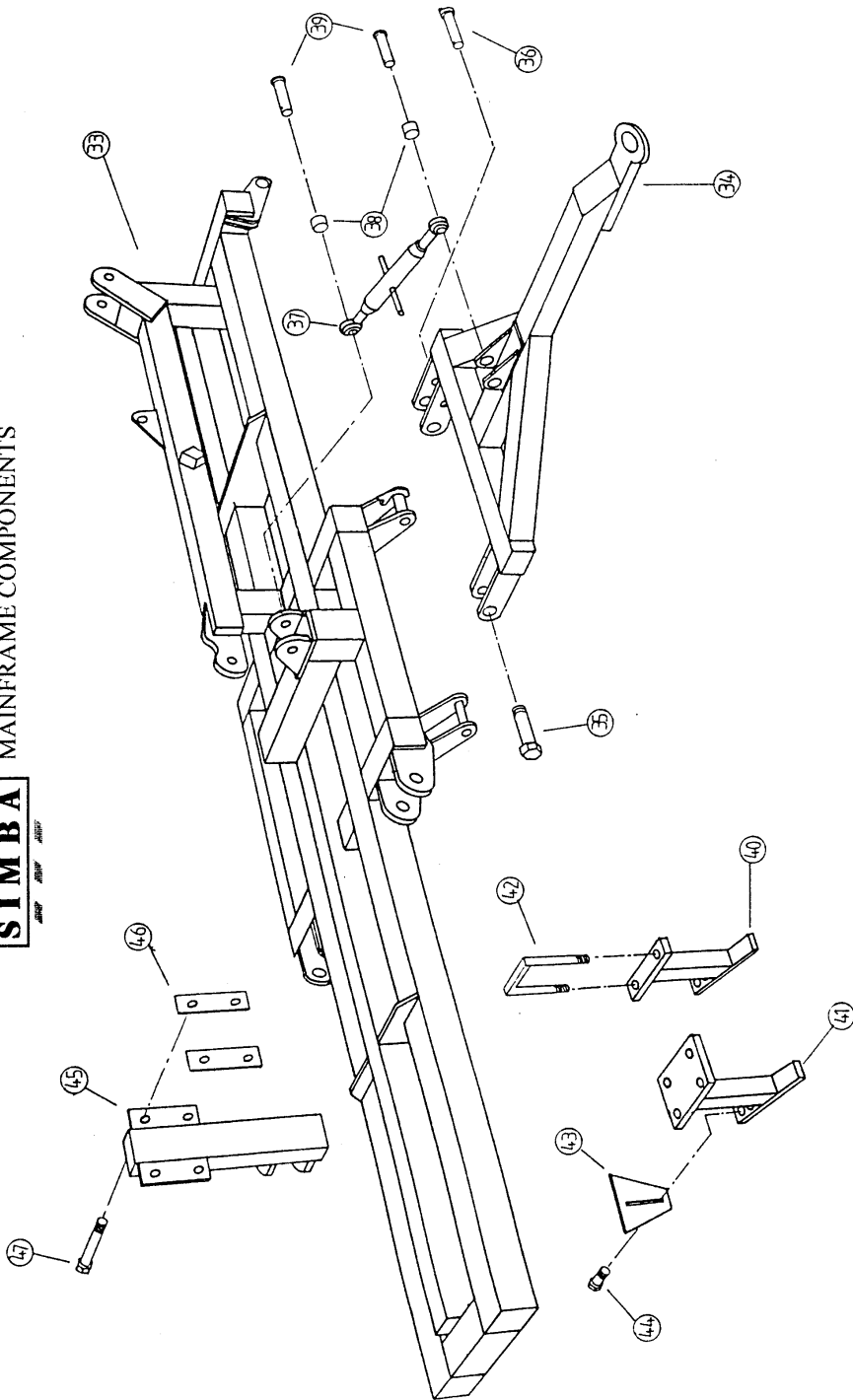
**END TOW
DOUBLE PRESS
3.3-4.6M INTERMESHED
DOUBLE PRESS**



**DOUBLE PRESS
TRANSPORT AXLE ASSEMBLY**

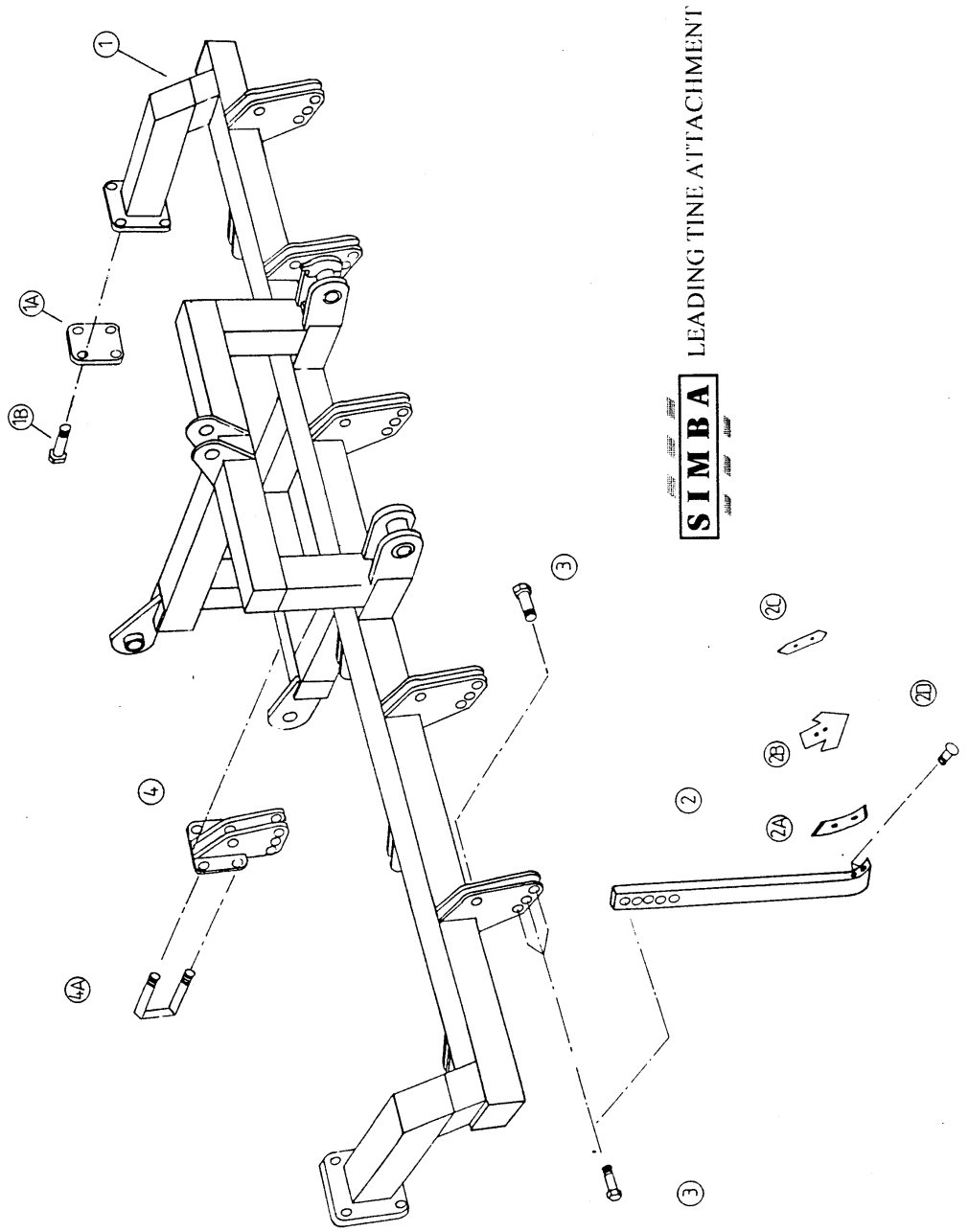
ITEM NO.	PT.NO.	DESCRIPTION
1	4059	Axle mainframe
2	0036	Pivot bolt
	2608 Fw	
	2011 N	
3	3517	Transport Drawbar
4	0140	5 Stud rim
	1072	10.0/75-15 10 Ply Tyre
5	0446	Hub cap bolt
6	0445	Hub cap
7	0444	" " Gasket
8	0443	Castle nut
9	0440	Outer bearing (Cup+Conne)
10	0438	Hub casting
11	0440	Inner bearing (Cup+Cone)
12	0439	Grease seal
13	0448	Wheel nut right hand.
	0707	Wheel stud right hand
14	2488	Split pin
15	0166 (3.3+3.8)	Transport ram
	0164 (4.6)	
16	1274	Ram pin (115x25)
17	0774	Shut off taps
18	0201	Banjo bolt
19	0200	Banjo block
	2263	Bonded washer
20	0189	15ft Hydraulic hose
21	0188	14ft " "
22	0166	Drawbar ram
23	0185	11ft Hydraulic hose
24	0184	10ft Hydraulic hose
	0203	Male-Male adaptor
	0205	QR coupling
25	1071	Ram pin (130x25)
26	0713	Ram pin (170x25)
27	4169	Retaining plate
28	0789	Bolt (M24x180)
29	3526	Bell crank
30	3010	Converter bush (50x30)
31	4168	Converter bush (100x30)
32	0159	CAT III Top link

MAINFRAME COMPONENTS



MAINFRAME COMPONENTS

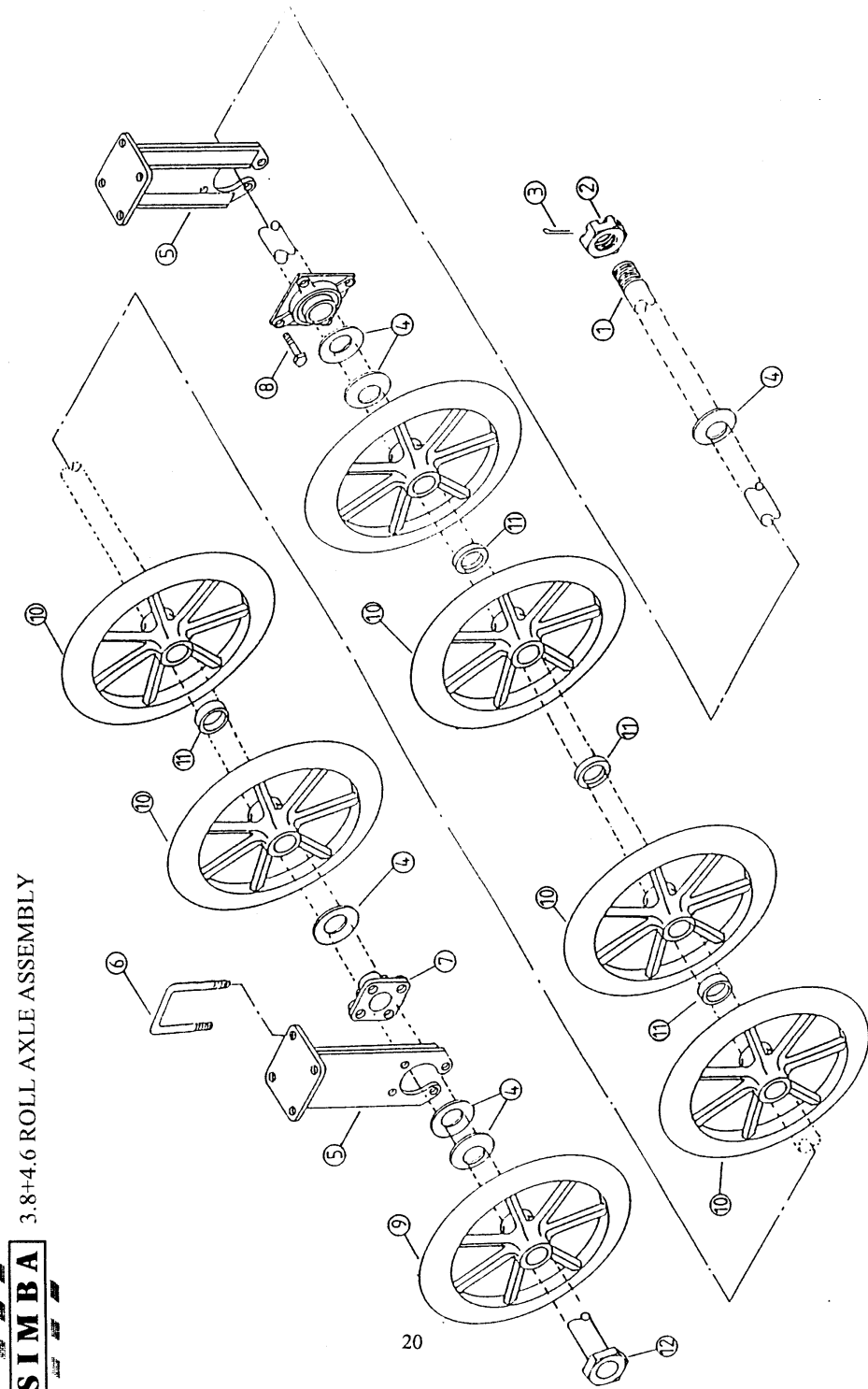
ITEM NO.	PART NO	DESCRIPTION
33	4056(3.3m) 4057(3.8m) 4058(4.6m)	Double press mainframe
34	4060	Work drawbar
35	0036 2608Fw 2011N	Pivot bolts
36	4061	Transport lockpin
37	0159	CAT III Toplink
38	3010	Converter bush (50x30)
39	1071	Pin (130x25)
40	3646	Bolt on scraper
41	3647(Lh) 4175(Rh)	Offset bolt on scraper
42	1619 2009N 2603Fw	Scraper U bolt
43	4899	Scraper blade
44	0004 2007N 2601Fw	Bolt (M12x50)
45	4398	Rear drawbar
46	4399	Clamping plates
47	1638 2009 2603Fw	Clamp bolts(M20x160)



LEADING TINE ATTACHMENT (OPTIONAL)

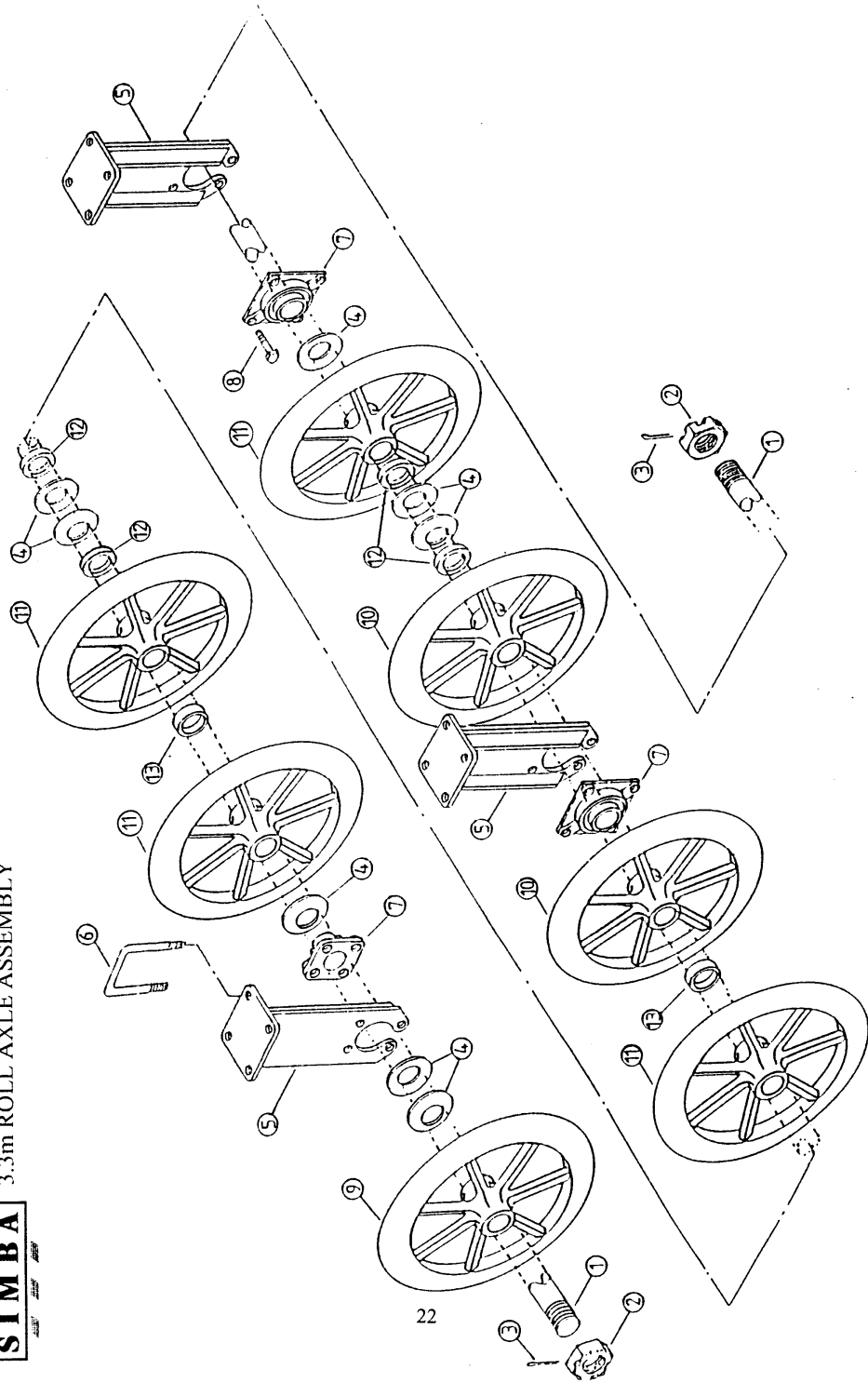
<u>ITEM NO.</u>	<u>PART NO.</u>	<u>DESCRIPTION</u>
1	4982(3.3m) 4983(3.8m) 4984(4.6m)	Leading tine frame
1A	4685	Clamp plate
1B	2655 2009N 2603Fw	Clamp bolt(M20x240)
2	4472	Leg
2A		Twisted Shovel point
2B		Ducks foot point
2C		Standard reversible point
2D	3448	Point retaining bolts (7/16 unc x75 csk/sq)
3	1901 2008N 2038Sw	Leg bolts(M16x80)
4	4985	Ldg tine bracket
4A	3704 2008N 2602Fw	U bolts (M16)

SIMBA 3.8+4.6 ROLL AXLE ASSEMBLY



ROLL AXLE ASSEMBLY > 3.8 + 4.6

ITEM NO.	PART NO.	DESCRIPTION
1	3786(3.8m) 4028(4.6m)	Roll axle
2	1698	Castle nut (M60)
3	2754	Split pin
4	1514	Belleville washer
5	6592	Bearing pillar
6	1619	U bolt(M20)
7	2009N 2603Fw	Bearing
8	5431	Bearing bolt
9	1102	Bearing bolt
10	1519	Press roll ring (110mm boss)
11	1515	" " " (150mm boss)
12	2806B	Spacer
13	1697	Half nut(M60)
	1520	Press roll ring(150mm boss)



ROLL AXLE ASSEMBLY >3.3

ITEM NO.	PART NO.	DESCRIPTION
1	2826	Roll axle
2	1698	Castle nut
3	2754	Split pin
4	1514	Belleville washer
5	6592	Bearing pillar
6	1619	U bolt
	2009N	
	2603Fw	
7	5431	Bearing
8	1102	Bearing bolt(M16)
	2008N	
	2602Fw	
9	-----	Not applicable
10	1520	Press roll ring (130mm boss)
11	1515	Press roll ring

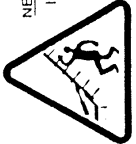
1
SIMBA

DOUBLE PRESS

2
S

3

DANGER
NEVER WORK UNDER RAISED OR FOLDED
IMPLEMENTS UNLESS ALL SECTIONS
ARE SAFELY SUPPORTED.
REFER TO INSTRUCTION MANUAL
BEFORE ANY MAINTENANCE WORK.



5
SIMBA

4
**PRESS ROLL/
CAMBRIDGE ROLL**

MAINTENANCE

- DAILY SERVICE**
- 1) DO NOT GREASE ROLL AXLE BEARINGS
 - 2) CHECK ALL PIN POINTS UNTIL GREASE
GROWS
 - 3) CHECK ROLL RINGS FOR DAMAGE
 - 4) CHECK HYDRAULIC CONNECTIONS FOR LEAKS
- WEEKLY SERVICE**
- 1) DO NOT OIL ROLL AXLE BEARINGS
 - 2) TIGHTEN ALL NUTS AND BOLTS INCLUDING
WHEEL NUTS
 - 3) CHECK ROLL AXLES (SEE OPERATORS MANUAL)
 - 4) CHECK TYRE PRESSURES - ADJUST IF
NECESSARY

3) CHECK WING GANG PINOT BOLTS ARE TIGHT
(SEE OPERATORS MANUAL)

END OF SEASON SERVICE
SEE OPERATORS MANUAL FOR
INSTRUCTIONS.

- OPERATION**
- 1) REMOVE DRAWBAR PITCH PIN IS
NEED TO BE CLOSED
 - 2) FULLY CLOSE DRAWBAR CYLINDER
CLOSE BOTH CYLINDER TAPS
 - 3) EXTEND WING CYLINDERS UNTIL
WING PANELS TO BURN
FRAME
 - 4) CLOSE WING CYLINDER TAP



7

SIMBA
Simba Machinery Ltd.
The Works, 375114, London W12, England.
Telephone: 01-734 1111

MANUFACTURERS OF
CULTIVATION, LAND
DEVELOPMENT AND EARTH
MOVING EQUIPMENT



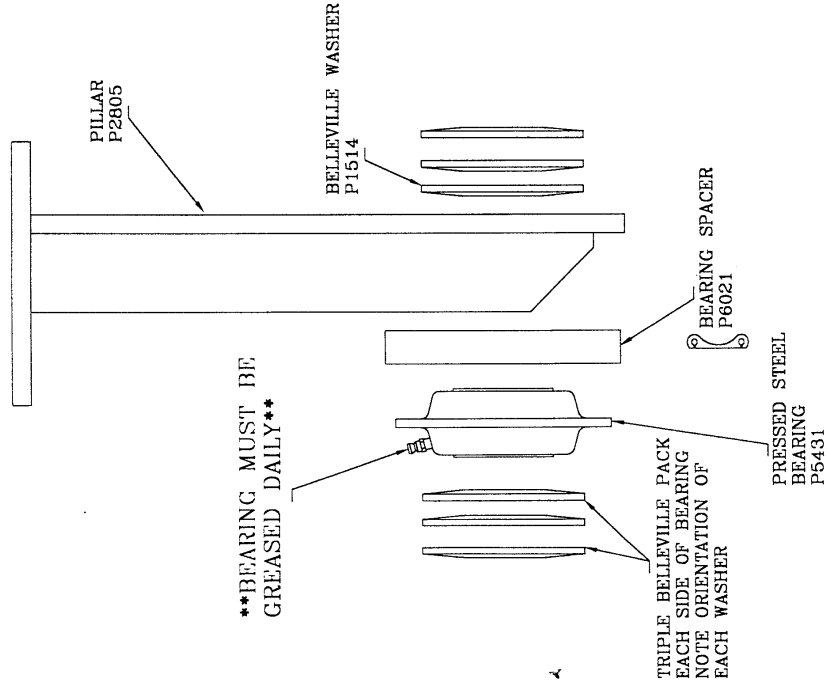
BRITISH MADE



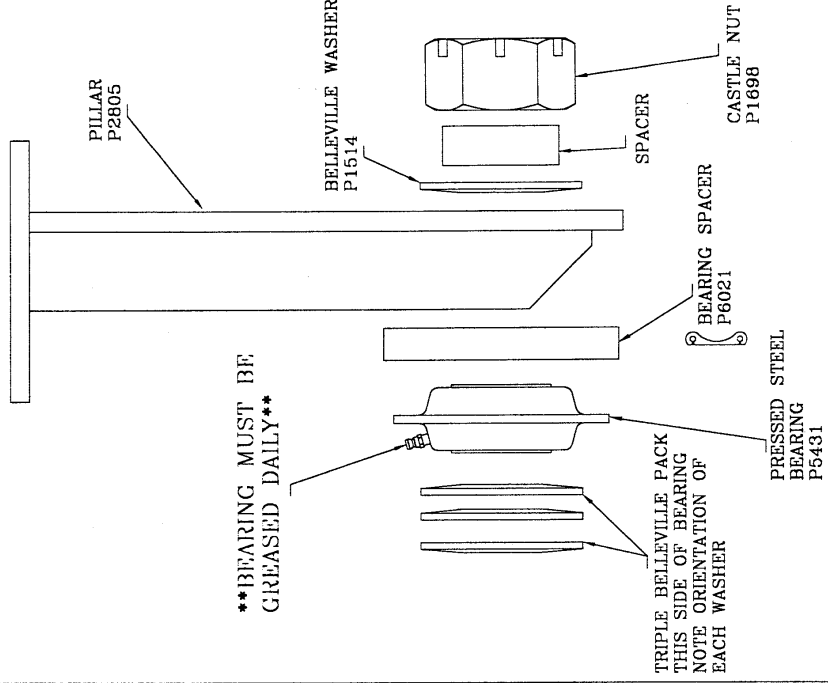
DOUBLE PRESS - STICKERS

ITEM NO.	PART NO.	DESCRIPTION
1	4196	Double Press
2	2912	Simba "S" Small
3	2918	Danger Raised sections
4	4147	Maintenance
5	2906	Simba - small
	2907	Simba - medium
	2908	Simba - large
6	2911	Union Jack
7	2913	Simba "S" large
8	2909	Simba Address
	4435	Operators manual.

PRESS ROLL PRESSED STEEL BEARING LAYOUT



TRIPLE BELLEVILLE PACK - CENTRE PILLAR LAYOUT



TRIPLE BELLEVILLE PACK - END PILLAR LAYOUT