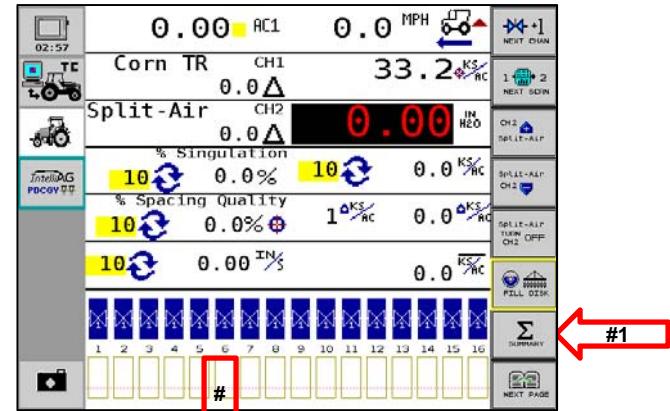
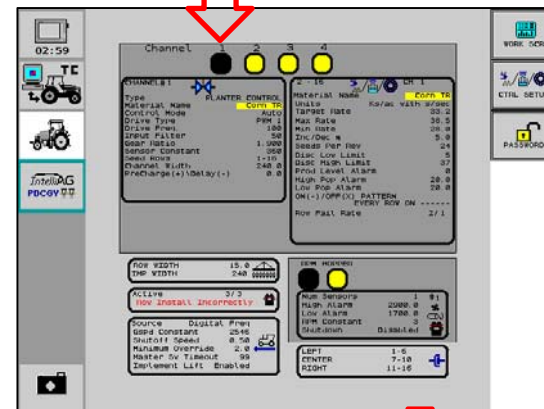


# Changing Crops (Ex.- Corn to Beans - Hyd. Drive)

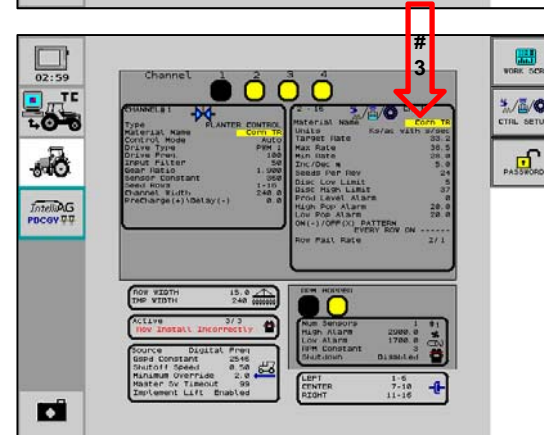
1. Main Work Screen;  
Push Summary Button



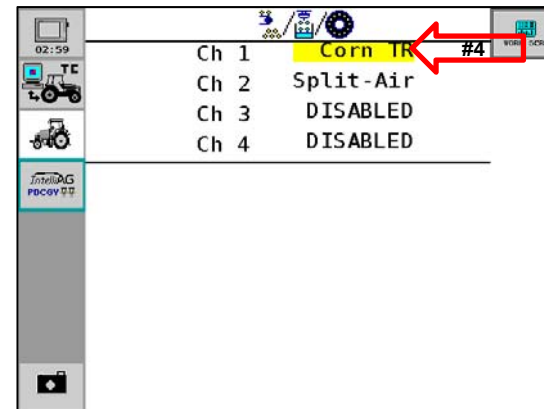
2. Push Channel # 1 At Top Of Screen.



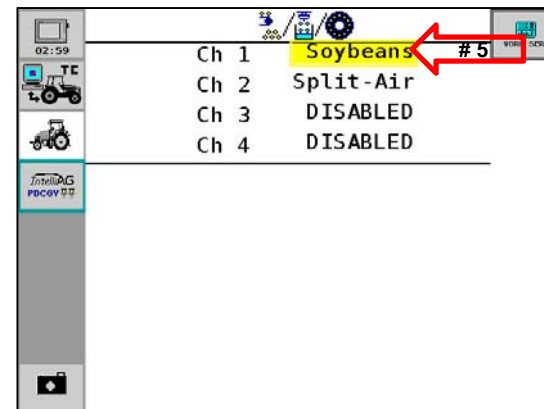
3. Push "Material Name"



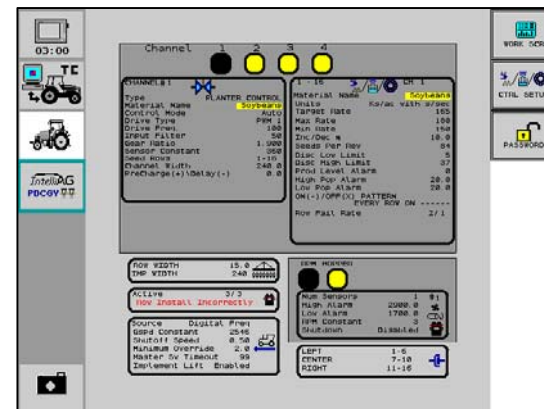
4. Push “Corn TR”



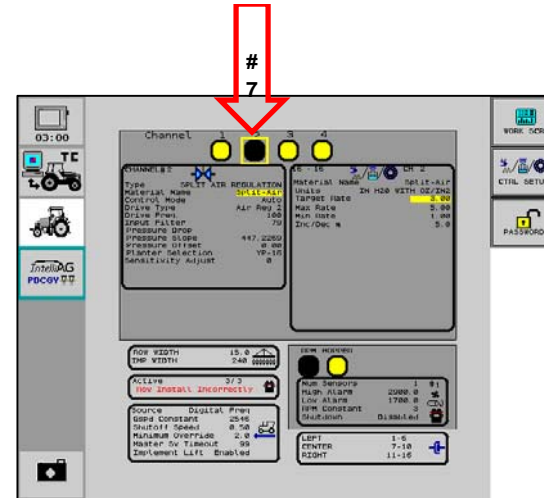
5. Change to Soybeans.  
Push The “ESC” Key To  
Return To Summary Screen



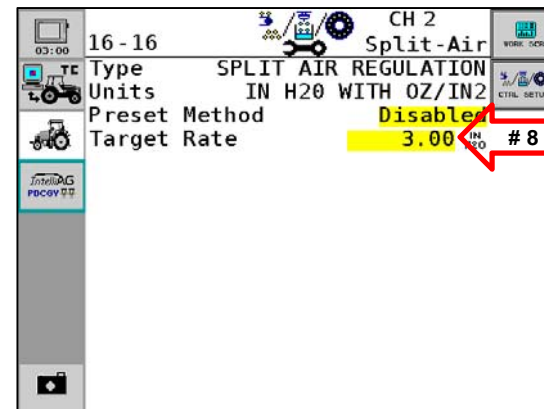
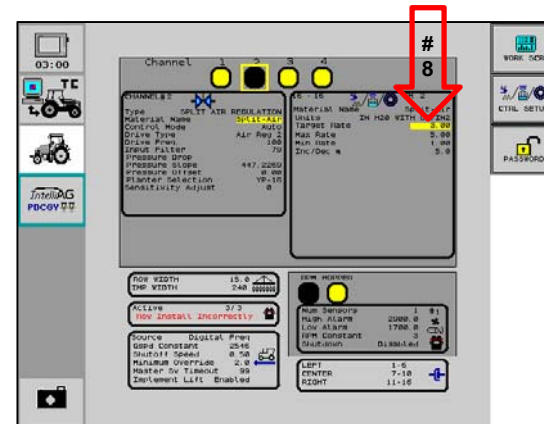
6. Verify Changes in Material  
Name On Summary Screen.



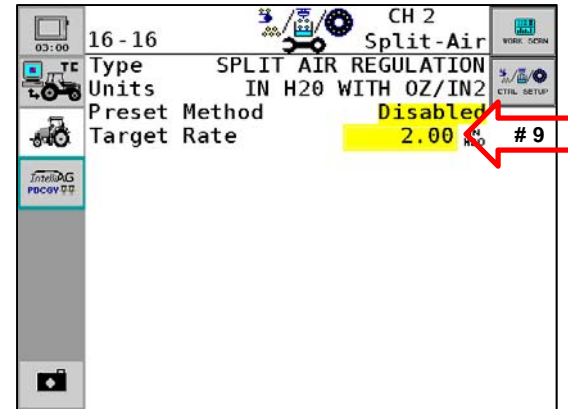
7. Push Channel 2 Button At Top of Screen.



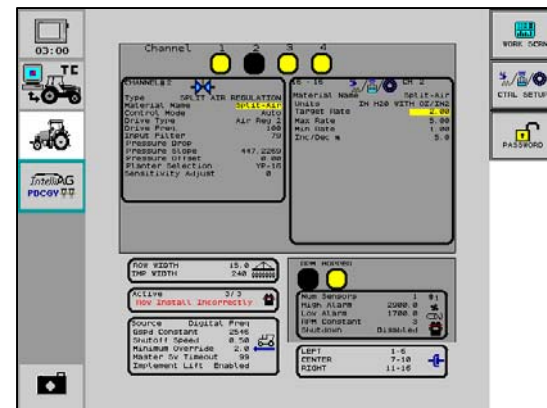
8. Push "3.00" Target Rate.



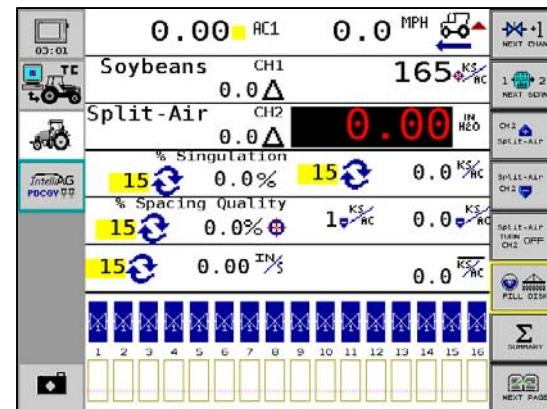
9. Change Target Rate To “2.00”.



10. Push the “ESC” Key to Return to Summary Screen. Verify Changes In Channel 2 “Target Rate”.



11. Return To Main Work Screen.



12. Ready To Plant Soybeans.