

# **Assembly Instructions for the Rolling Harrow**

## **Verti-Till**

**9/23/03**

Your initial action is to bolt the rolling harrow drop extensions [(62) 589-128H] to the back 4x4 tube on the Verti-Till with 5/8x4x5 ½ U-Bolts [(63) 806-184C] 5/8" hex nuts [(25) 803-021C] and 5/8" lock washers [(26) 804-022C]. Be sure to place them as shown in Figure 1. Do not tighten these bolts at this time. Your next step is to U-Bolt the drag frame(s) [(61) 589-129H or 589-130H] to the drop extensions. Be sure everything is placed in the correct dimensions and tighten everything down at this time.

The rolling harrow gangs shown in figure 2, come to you partially assembled. To finish assembly, refer to the table in figure 2 and assemble accordingly. Start by locating the correct rolling harrow tube, center it over your partial assembly on the bearing hangers [(52) 589-142H], and mount the tube using 5/8x3x4 ½ U-bolts [(44) 806-183C] with a lock washer and nut. Your next step is to locate the ball joint assemblies [(59) 589-064H]. Figure 2 shows you the dimensions to mount the ball joint assemblies on the rolling harrow tube. Count the number of each assembly in figure 1 and assemble accordingly.

Mount the rolling harrow brackets [(60) 589-057H] to the under side of the drag frames according to the dimensions in figure 1, using a 5/8x3x4 ½ U-bolt [(44) 806-183C] with a lock washer and nut. You may tighten the U-bolts on all the brackets that are closest to the rear of the machine. Leave the front brackets loose to slide until the rolling harrow assemblies are hung under the frame. Use the 1x4 hex bolt and 1" nylock nut through the harrow brackets (589-057H) and ball joint assemblies [(59) 589-064H] to hang the rolling harrow assemblies under the frame. Be careful to put the proper gang in the proper location and be sure that the assemblies are oriented correctly as shown in figure 2. When all gangs are hung under the frame, tighten the remaining U-bolts.

# VT7300 — ROLLING HARROW PLACEMENT @ 22°

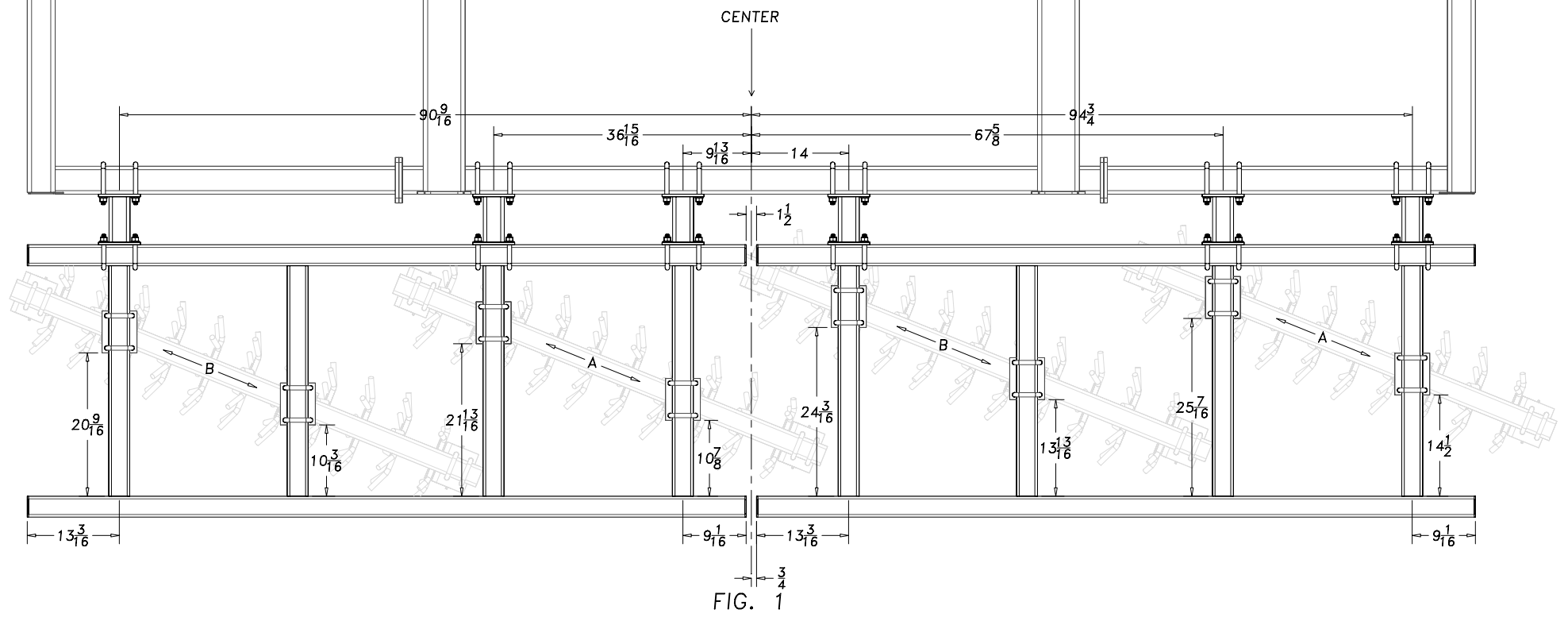


FIG. 1

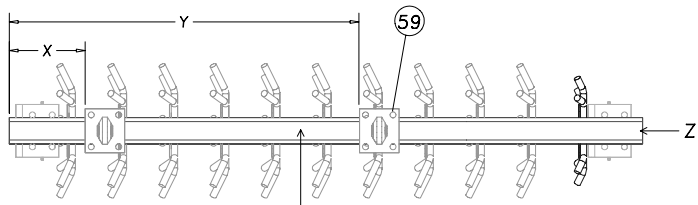


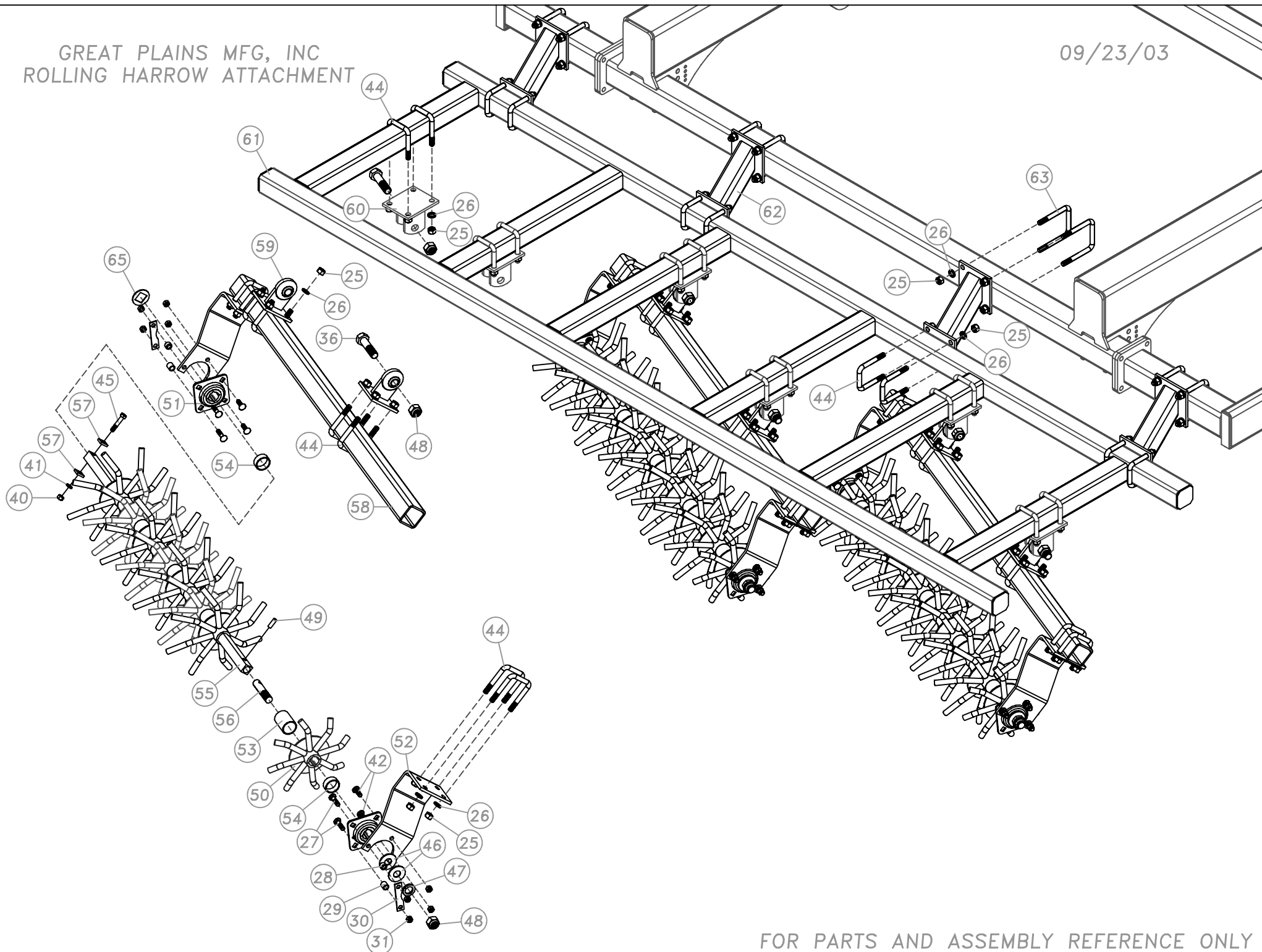
FIG. 2

ROLLING HARROW GANG—  
CENTER TUBE ON BRACKETS

BALL JOINT LOCATION			
	X DIM	Y DIM	Z TUBE
A 10 WHEEL	12 3/4"	42"	66"
B 11 WHEEL	14 1/8"	41 11/16"	72"

GREAT PLAINS MFG, INC  
ROLLING HARROW ATTACHMENT

09/23/03



FOR PARTS AND ASSEMBLY REFERENCE ONLY



**VERTI-TILL FINISHING ATTACHMENTS  
ROLLING HARROW**

REF #	DESCRIPTION	PART NO.	5300	7300
<b>ROLLING HARROW GANG ASSEMBLIES</b>				
	7 WHEEL ROLLING HARROW GANG	589-065K		
	8 WHEEL ROLLING HARROW GANG	589-066K		
	9 WHEEL ROLLING HARROW GANG	589-067K	1	
	10 WHEEL ROLLING HARROW GANG	589-068K	2	2
	11 WHEEL ROLLING HARROW GANG	589-071K		2
	12 WHEEL ROLLING HARROW GANG	589-095K		
	13 WHEEL ROLLING HARROW GANG	589-117K		
<b>(INDIVIDUAL PARTS INCLUDED IN GANG ASSEMBLIES)</b>				
29	3/4 LONG X 1/2 TINE STOP/SPACR	550-134D	6	8
28	1/2 LONG X 1/2 BOLT SPACER	585-013D	6	8
50	SPIDER WHEEL LARGE	589-055H	12	18
	SPIDER WHEEL OFFSET @ 22.5	589-056H	14	20
	SPIDER WHEEL SMALL	589-094H	3	4
51	BEARING, 1 1/4" SQUARE	822-209C	6	8
52	BEARING HANGER	589-142H	6	8
53	SPACER - LONG	589-026D	26	38
54	SPACER - SHORT	589-027D	6	8
55	43 7/8 ROLLING HARROW SHAFT	589-014D	0	0
	49 5/8 ROLLING HARROW SHAFT	589-015D	0	0
	55 1/2 ROLLING HARROW SHAFT	589-016D	1	0
	61 3/8 ROLLING HARROW SHAFT	589-017D	2	2
	67 1/8 ROLLING HARROW SHAFT	589-029D	0	2
	73 ROLLING HARROW SHAFT	589-050D	0	0
	79 3/8 ROLLING HARROW SHAFT	589-056D	0	0
30	ZERK GUARD ROLLING HARROW	589-085D	6	8
56	1" THREADED STUB SHAFT	800-364C	3	4
57	WASHER, RECT 1/4X1" FLAT	585-057D	6	8
49	PIN, 1/2" HR RND 1 3/8" LONG	585-056D	3	4
65	TREADER SHAFT 1/8" SPACER	585-066D	3	4
58	48" ROLLING HARROW TUBE	589-018D	0	0
	54" ROLLING HARROW TUBE	589-019D	0	0
	60" ROLLING HARROW TUBE	589-020D	1	0
	66" ROLLING HARROW TUBE	589-021D	2	2
	72" ROLLING HARROW TUBE	589-031D	0	2
	78" ROLLING HARROW TUBE	589-049D	0	0
	84" ROLLING HARROW TUBE	589-055D	0	0
31	NUT HEX TOP LOCK 1/2-13 PLT	803-342C	24	32
40	1/2" HEX NUT	803-020C	3	4
41	1/2" LOCK WASHER	804-015C	3	4
42	1/2 x 1 1/2" CARRIAGE BOLT	802-106C	12	16
27	1/2 x 2" CARRIAGE BOLT	802-129C	12	16
45	1/2 x 2 1/2" HEX BOLT	802-130C	3	4
25	5/8" HEX NUT	803-021C	24	32
26	5/8" LOCK WASHER	804-022C	24	32
44	5/8 x 3 x 4 1/2" U-BOLT	806-183C	12	16
46	1" FLAT WASHER	804-028C	6	8
47	1" LOCK WASHER	804-027C	3	4
48	1" NYLOCK HEX NUT	803-038C	3	4
<b>ROLLING HARROW GANG MOUNTING HARDWARE</b>				
59	BALL JOINT BRACKET	589-064H	6	8
60	BRACKET - ROLLING HARROW	589-057H	6	8
61	12 1/2' VERTI-TILL DRAG FRAME	589-129H	1	
	17 1/2' VERTI-TILL DRAG FRAME	589-130H		2
62	ROLLING HARROW DROP EXT	589-128H	4	6
36	1 x 4 HEX BOLT	802-073C	6	8
48	1" NYLOCK NUT	803-038C	6	8
25	5/8" HEX NUT	803-021C	80	112
26	5/8" LOCK WASHER	804-022C	80	112
63	5/8 x 4 x 5 1/2" U-BOLT	806-184C	8	12
44	5/8 x 3 x 4 1/2" U-BOLT	806-183C	32	44