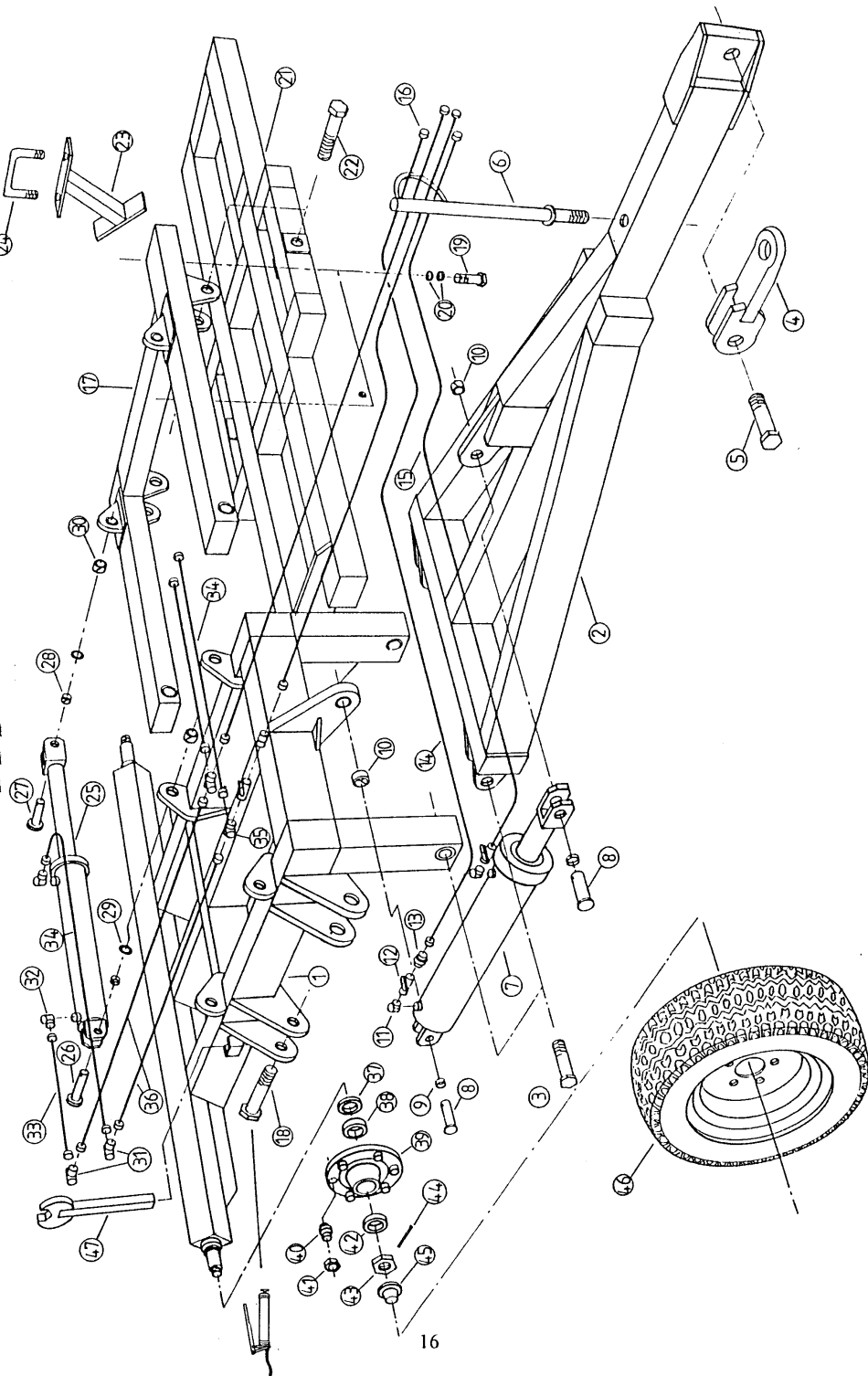


Double Press

**FW DOUBLE PRESS MAINFRAME
AND DRAWBAR ASSEMBLY**

SIMBA

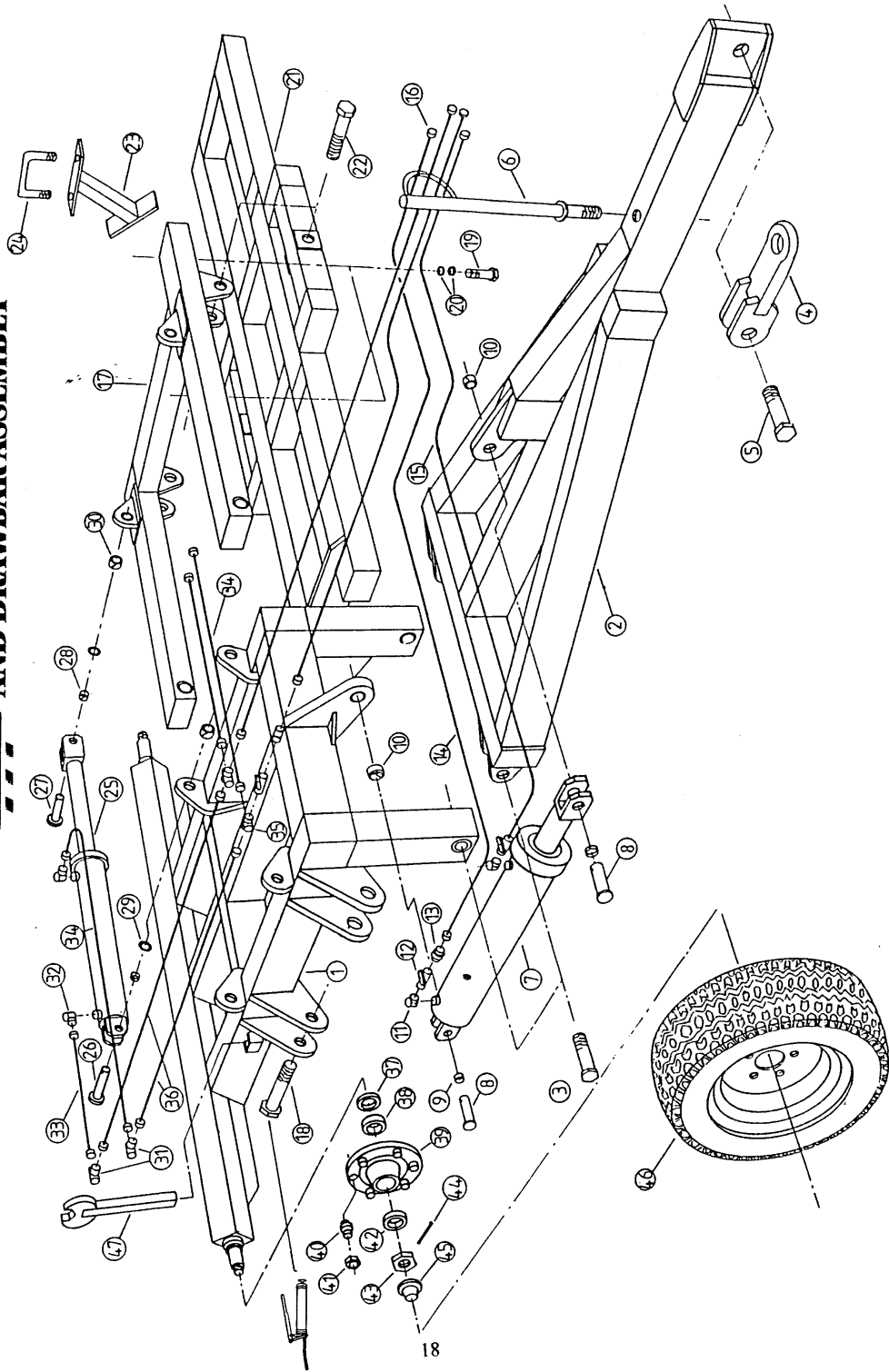


DOUBLE PRESS

MAIN FRAME AND WING ASSEMBLY

ITEM NO.	PT.NO.	DESCRIPTION
1	4276	MAINFRAME
2	4277	DRAWBAR
3	0045	PIVOT BOLT (M36x200)
4	2331	SHACKLE
5	0983	SHACKLE BOLT
6	0985	HOSE MAST
7	1055	DRAWBAR CYLINDER (125X400)
8	0389	PIN (130X30)
9	4127	SPRUNG BUSH ID 32MM X 25MM
10	1646	" " ID 32MM X 32MM
11	0200	BANJO BLOCK
	0201	BANJO BOLT
	2263	BONDED WASHER
12	0774	SHUT OFF TAP
13	0203	MALE-MALE ADAPTOR
14	0185	11FT HYDRAULIC HOSE
15	0187	13FT HYDRAULIC HOSE
16	0205	MALE QR
17	----	FOLDING WING
18	1597	M36X240 BOLT
19	0941	M30X90 BOLT
20	2608	FLAT WASHER
	2011	BINX NUT
21	----	PIVOTING SECTION
22	0045	PIVOT BOLT(M36X200)
	2609	FLAT WASHER
	2012	NUT
23	3646	SCRAPER
	4899	SCRAPER BLADE
	0004	BLADE BOLT (M12X50)
	2007	NUT
	2601	FLAT WASHER
24	1619	U BOLT(M20)
	2009	NUT
	2603	FLAT WASHER
25	0164	WING CYLINDER(100X400)
26	1274	PIN(115X25)
27	2834	PIN/TRANSPORT(115/55X25)
	2484	LYNCH PIN
28	4126	SPRUNG BUSH ID 26MM X 20MM
29	2604B	WASHER
30	1645	SPRUNG BUSH ID 26MM X 32MM
31	0204	T-COUPLING

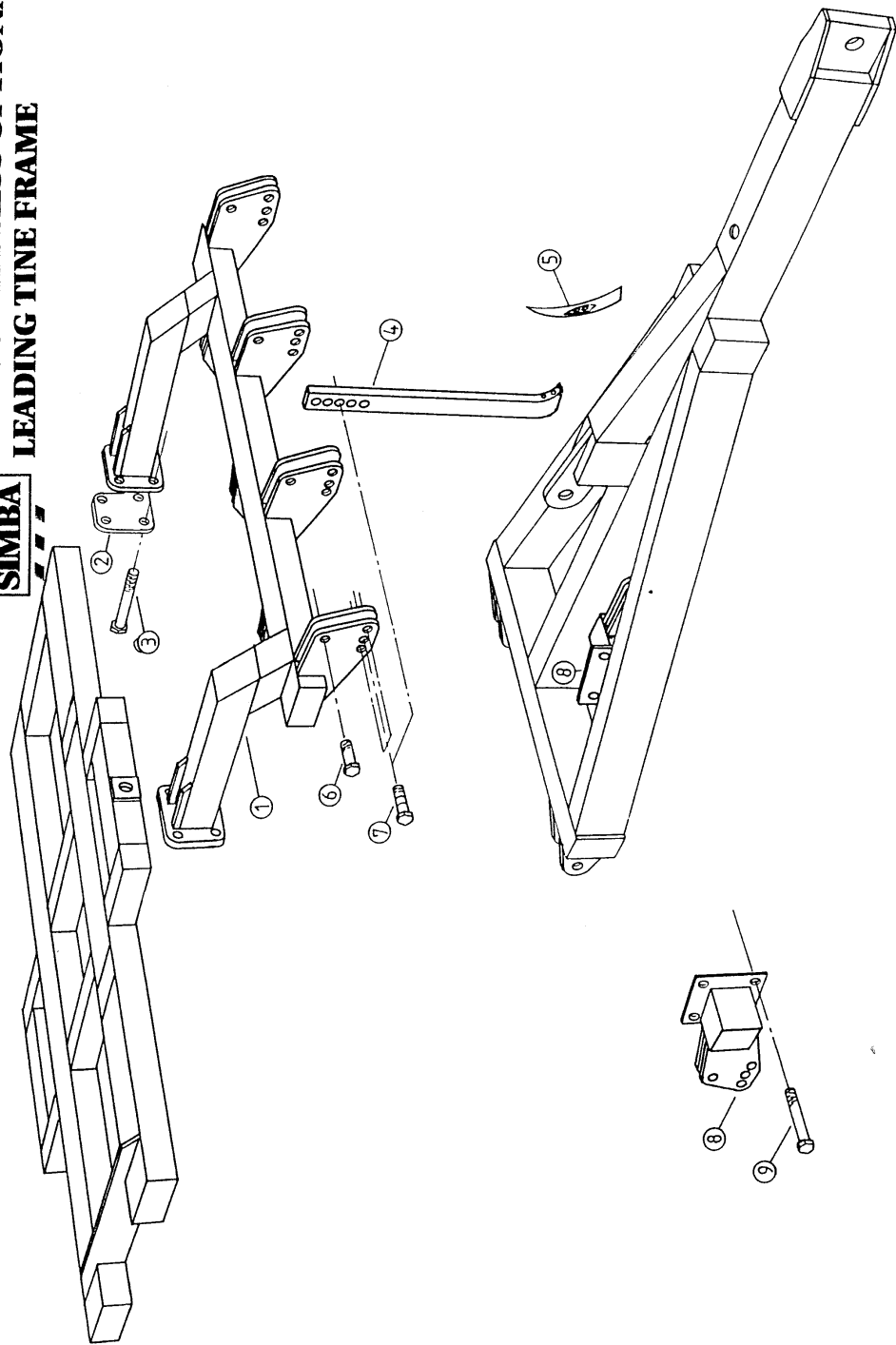
SIMBA
**FW SADDLE FITNESS MAINFRAME
 AND DRAWBAR ASSEMBLY**



32	-----	SEE 11
33	0176	2FT HYDRAULIC HOSE
34	0177	3FT HYDRAULIC HOSE
35	0209	4 WAY CONNECTION
36	0189	15FT HYDRAULIC HOSE
37	0365	GREASE SEAL
38	0366	INNER BEARING CUP, CONE
39	0462	HUB CASTING
40	0709	WHEEL STUD
41	0471	WHEEL NUT
42	0367	OUTER BEARING CUP, CONE
43	0710	CASTLE NUT
44	2488	SPLIT PIN
45	0370	HUB CAP
	0739	GASKET
	0469	RETAINING BOLT
46	4128	WHEEL - 400/60 - 15 TYRE 6 STUD HUB
47	4233	AXLE SPANNER(M60)

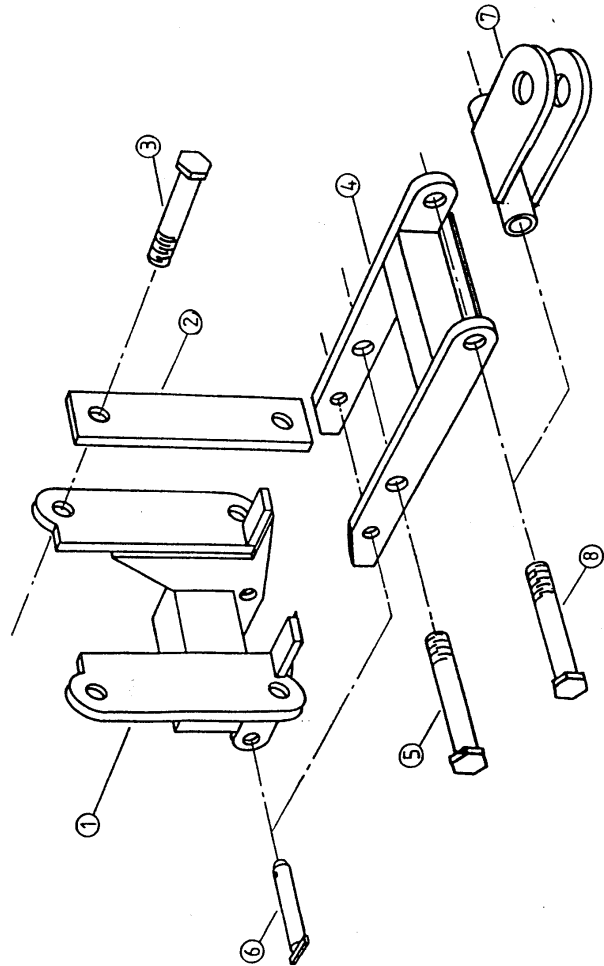
**FW DOUBLE PRESS OPTIONA
LEADING TINE FRAME**

SIMBA



LEADING TINE FRAME

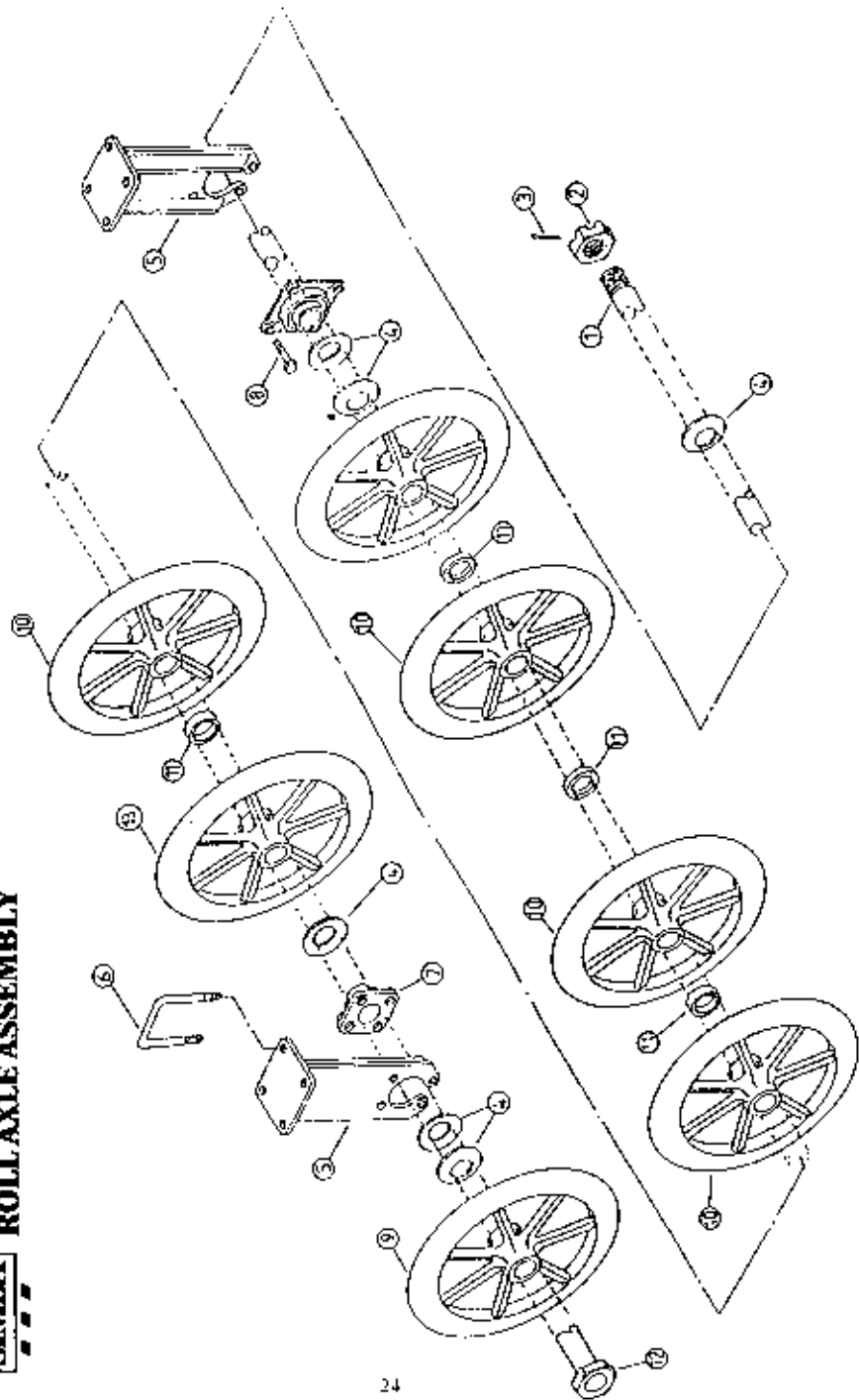
<u>ITEM NO.</u>	<u>PT.NO.</u>	<u>DESCRIPTION</u>
1	-----	LEADING TINE FRAME
2	4685	RETAINING PLATE
3	2655	RETAINING BOLT M20
	2009	NUT (M20 LOCK)
	2603	FLAT WASHER (M20)
4	4472	LEG
5	3017	POINT
	3448	POINT BOLT 7/16" x 75 CSK.SQ (NI)
6	1901	LEG PIVOT BOLT M16x70
	2008	NUT M16
	2602	FLAT WASHER M16
7	5103	SHEAR BOLT M16x90 NOTCHED
8	4681	DRAWBAR LEG MOUNTING CLAMP
9	1638	CLAMP BOLT
	2009	NUT
	2603	FLAT WASHER



REAR DRAWBAR ATTACHMENT

<u>ITEM NO.</u>	<u>PT.NO.</u>	<u>DESCRIPTION</u>
1	4415	MAINFRAME CLAMP
2	4419	RETAINING PLATE
3	1224	CLAMP BOLT(M20X180)
	2009	BOLT
	2603	FLAT WASHER
4	4416	CLEVIS PIVOT
5	0056	PIVOT BOLT(M30X240)
	2011	NUT
	2608	FLAT WASHER
6	4418	CLEVIS PIN
7	4417	CLEVIS
8	-----	SEE 5

FW DOUBLE PRESS 4.6M
SIMBA
ROLL AXLE ASSEMBLY



24

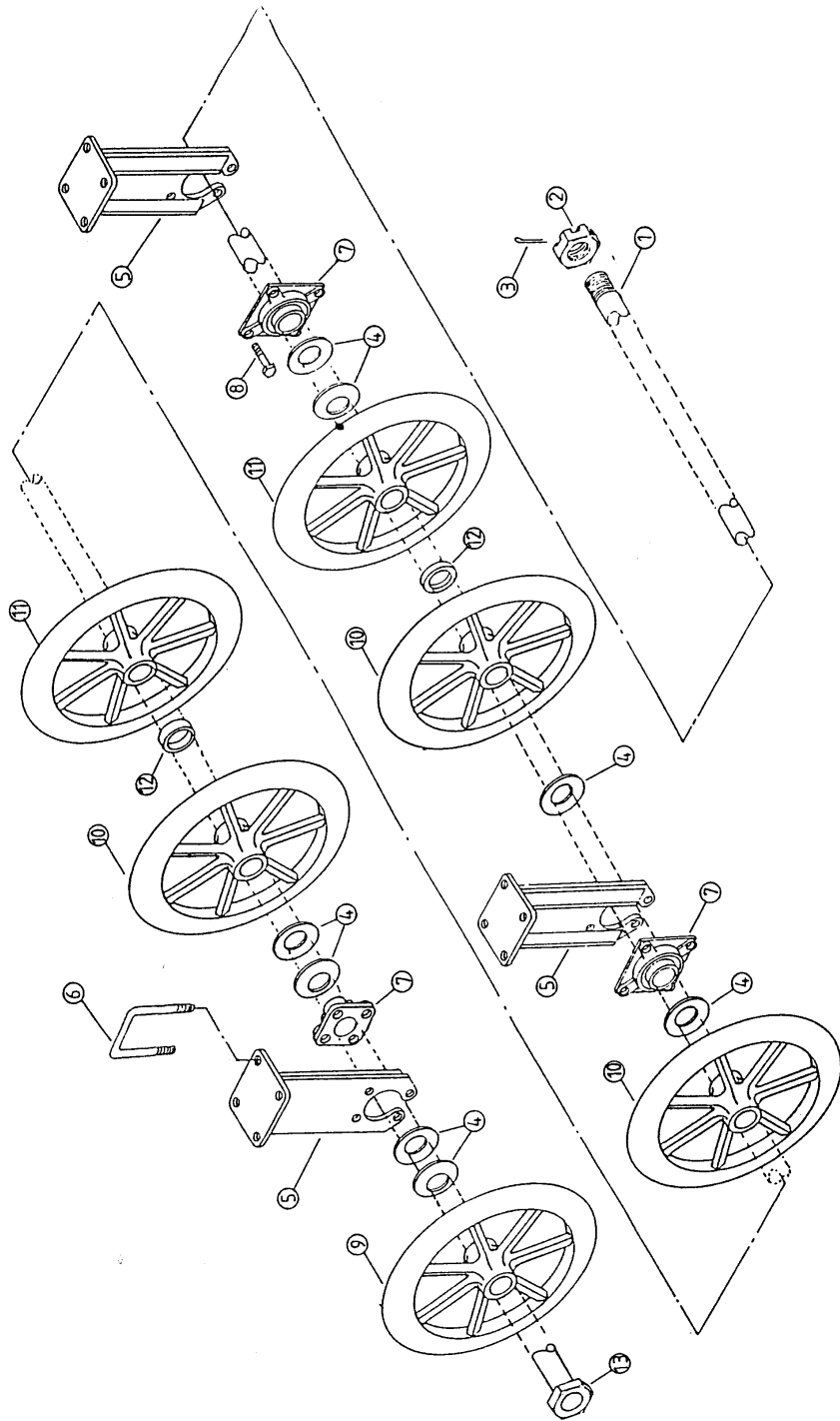
ROLL AXLE ASSEMBLY 4.6M

ITEM NO.	PT. NO.	DESCRIPTION
1	-----	ROLL AXLE - SEE BELOW
2	1698	AXLE CASTLE NUT(M60)
3	2754	SPLIT PIN
4	1514	BELLEVILLE WASHER
5	6592	BEARING PILLAR
6	1619	PILLAR U' BOLT
	2009	M20 LOCKING NUT
	2603	M20 FLAT WASHER
7	5431	BEARING
8	1102	BEARING BOLT(M16)
	2008	M16 LOCKING NUT
	2602	M16 FLAT WASHER
9	1519	PRESS ROLL. RING 630MM (110MM BOSS)
10	1515	" " " " (150MM BOSS)
11	2806B	SPACER(30MM)
12	1697	HALE NUT(M60)
13	1520	PRESS ROLL RING 630MM (130MM BOSS)

WORKING WIDTH	AXLE QTY	AXLE LENGTH	PT NO
4.6M	2	2485MM	4308

25

SIMBA
FW DOUBLE PRESS 5.5M
AND 6.6M ROLL AXLE ASSEMBLY



ROLL AXLE ASSEMBLY 5.5&6.6M

ITEM NO.	PT NO	DESCRIPTION
1	-----	ROLL AXLE - SEE BELOW
2	1698	AXLE CASTLE NUT(M60)
3	2754	SPLIT PIN
4	1514	BELLEVILLE WASHER
5	6592	BEARING PILLAR
6	1619	PILLAR U BOLT(M20)
	2009	M20 LOCKING NUT
	2603	M20 FLAT WASHER
7	5431	BEARING
8	1102	BEARING BOLT(M16)
	2008	M16 LOCKING NUT
	2602	M16 FLAT WASHER
9	1519	PRESS ROLL RING 630MM (110MM BOSS)
10	1520	" " " " (130MM BOSS)
11	1515	" " " " (150MM BOSS)
12	2806B	SPACER(30MM)
13	1697	HALF NUT(M60)

WORKING WIDTH	AXLE QTY	AXLE LENGTH	PT.NO
5.5M	4	2870MM	4309
6.6M	4	3410MM	4310

①

SIMBA



②

DANGER

NEVER WORK UNDER RAISED OR FOLDED IMPLEMENTS UNLESS ALL SECTIONS ARE SAFELY SUPPORTED.

REFER TO INSTRUCTION MANUAL BEFORE ANY MAINTENANCE WORK.

③

SIMBA

⑤

PRESS ROLL / CAMBRIDGE ROLL

④

MAINTENANCE

- DAILY SERVICE**
- 1) DO NOT GREASE ROLL AXLE BEARINGS
 - 2) GREASE ALL PIVOT POINTS UNTIL GREASE SHOWS
 - 3) CHECK ROLL RINGS FOR DAMAGE
 - 4) CHECK HYDRAULIC CONNECTIONS FOR LEAKS
- WEEKLY SERVICE**
- 1) DO NOT GREASE ROLL AXLE BEARINGS
 - 2) TIGHTEN ALL NUTS AND BOLTS INCLUDING CHECK ROLL AXLES (SEE OPERATORS MANUAL IF LOOSE)
 - 3) CHECK TYRE PRESSURES - ADJUST IF NECESSARY
- END OF SEASON SERVICE**
- SEE OPERATORS MANUAL FOR INFORMATION
- 1) ENSURE DRAWBAR FLOAT PIN IS REMOVED
 - 2) CLOSE SEPARATOR CYLINDER
 - 3) CLOSE BOTH CYLINDER FLAPS
 - 4) EXTENDING WING CYLINDERS UNTIL WINGS ARE PARALLEL TO MAIN WING
 - 5) CHECK WING CYLINDER TAP



4147

Simba International Ltd.

Manufacturers of Cultivation, Land Development and Earth Moving Equipment

Made Great in Britain

⑦



⑥

STICKERS

ITEM NO	PT NO	DESCRIPTION
1	4196	DOUBLE PRESS
2	2912	SIMBA "S"- (SMALL)
3	2918	DANGER RAISED SECTIONS*
4	4147	MAINTENANCE*
5	2906	SIMBA-(SMALL)
	2907	SIMBA-(MEDIUM)
	2908	SIMBA-(LARGE)
6	2911	UNION JACK (BRITISH MANUFACTURED)
7	2909	SIMBA ADDRESS
8	4435	OPERATORS MANUAL AND SPARE PARTS BOOK

*NOTE - REPLACE IF WORN TO ENSURE SAFE USE AND CORRECT MAINTENANCE .

F/W DOUBLE PRESS '99 AXLES & RINGS

MACHINE	AXLE LENGTH	AXLE P No	AXLE QTY	90/90 P7784	75/75 P7785	90/75 P7786	90/55 P7787	55/55 P7788	DISC RINGS P8192
4.6m F/W DOUBLE PRESS									
180mm SPACED	2645mm	P8091	4	44	-	-	4	4	-
230mm SPACED	2645mm	P8091	4	32	4	4	-	-	-
DISC RING OPTION	2645mm	P8091	4	-	-	-	-	-	80
5.5m F/W DOUBLE PRESS									
180mm SPACED	1385mm 1485mm	P7728 P8082	4 4	36	-	-	12	12	-
230mm SPACED	1385mm 1615mm 1485mm 1245mm	P7728 P7729 P8082 P8084	2 2 2 2	20	12	16	-	-	-
DISC RING OPTION	1385mm 1615mm 1485mm 1245mm	P7728 P7729 P8082 P8084	2 2 2 2	-	-	-	-	-	96
6.1 F/W DOUBLE PRESS									
180mm SPACED	1385mm 1615mm 1845mm 1665mm	P7728 P7729 P7730 P8083	1 3 1 3	44	-	-	12	12	-
230mm SPACED	1485mm 1615mm 1845mm 1665mm	P8082 P7729 P7730 P8083	3 3 1 1	26	12	16	-	-	-
DISC RING OPTION	1485mm 1615mm 1845mm 1665mm	P8082 P7729 P7730 P8083	3 3 1 1	-	-	-	-	-	108
6.6 F/W DOUBLE PRESS									
180mm SPACED	1665mm 1760mm	P8083 P8085	4 4	48	-	-	12	12	-
230mm SPACED	1615mm 1845mm 1920mm 1700mm	P7729 P7730 P8086 P8090	3 1 1 3	30	12	16	-	-	-
DISC RING OPTION	1615mm 1845mm 1920mm 1700mm	P7729 P7730 P8086 P8090	3 1 1 3	-	-	-	-	-	116
7.6 F/W DOUBLE PRESS									
180mm SPACED	1845mm 1665mm 2020mm	P7730 P8083 P8087	3 3 2	48	-	-	16	16	-
230mm SPACED	1615mm 1845mm 2075mm	P7729 P7730 P7731	3 2 3	32	16	16	-	-	-
DISC RING OPTION	1615mm 1845mm 2075mm	P7729 P7730 P7731	3 2 3	-	-	-	-	-	128

SEE TABLE FOR AXLE LENGTH / P.No AND DISC RING QTY FOR WHOLE MACHINE

